



2025 NR 1

# Own brand product catalogue



*at the heart of healthcare*





#### **At the heart of healthcare**

Mediq serves healthcare professionals and patients with medical devices, healthcare products and innovative solutions. We work with hospitals, healthcare facilities, GPs and nurses to ensure that they can provide best possible care. We also supply people with the daily support and care they need to successfully self-manage their chronic condition. Both in health-care settings and at home.

#### **Our Vision: Enabling Sustainable Healthcare**

At Mediq, we are at the heart of healthcare, supporting delivery to patients' homes, practitioners, care institutions, and hospitals. We offer products, solutions, and services across major disease areas, driving innovative solutions to address healthcare's biggest challenges.

Fueled by our dedicated team, we optimize time and resources, making care more manageable for providers, efficient for payors, better for the environment, and ultimately better for patients and society. We call that Sustainable Care.

#### **Our ESG Efforts: We Care to Care**

At Mediq, responsible and ethical business practices are at the heart of everything we do, guiding our actions towards patients, employees, partners, suppliers, and investors. Mediq's ESG (Environmental, Social, Governance) strategy is built on four key pillars: products, services, operations, and people. Our goal is to achieve carbon neutrality and create a lasting positive impact on our environment and communities by 2050.

#### **Providing empowerment, support and care**

A lot has happened since Mediq was founded in the Netherlands in 1899 as a cooperative of pharmacists. Our drive to help patients live higher quality lives is what has made our company the leading European healthcare provider it is today. To this end, we consistently invest in operational excellence as well as advanced digital technologies and innovative care delivery models. Always looking for new opportunities to make life and work easier and more enjoyable for people with healthcare needs and those who care for them.

#### **Mediq is a major force in European Healthcare**

We have a strong presence across 14 countries. We support every patient, every healthcare professional in all facets of healthcare in every country. The headquarter of Mediq is situated in the Netherlands.

#### **Mediq Own Brand: Innovating for quality care**

At Mediq, we don't just distribute healthcare products—we innovate, develop, and manufacture them. Our Own Brand division (Medeco B.V.) is the legal manufacturer of our trusted brands Klinion, Absorin, Curion and Cenaman. These brands embody our commitment to high-quality, reliable solutions tailored to the evolving needs of healthcare professionals and patients.

Our Own Brand portfolio covers essential healthcare needs, including wound care, diabetes care, personal protection, nursing & facility, infusion therapy, incontinence care, and medical nutrition. This in-house expertise allows us to adapt to market demands, optimize supply chains, and drive forward our mission to improve lives through better healthcare.



## Environmental Social Governance

At Mediq, we believe that care works best when people feel heard. This conviction shapes our approach to healthcare, ensuring that our patients, consumers, partners, and communities are at the heart of everything we do. We are committed to pushing healthcare forward responsibly, balancing business growth with sustainability to empower patients to lead fulfilling lives. Our success relies on trust, transparency, and a commitment to sustainable and responsible practices. Our ESG strategy is organized around four pillars: Products, Services, Operations, and People, all aligned with key UN Sustainable Development Goals.

## We Care to Care

We recognize that the choices we make today will shape the world of tomorrow. That's why we have curated the Care to Care selection, a range of products that meet stringent sustainability criteria. This selection is based on the circularity principle (the 9 R's of sustainability: rethink, refuse, reduce, reuse, rehome, repair, restore, recycle, and rot). These principles guide us and our customers in selecting products that are not only effective but also more environmentally responsible.



- Possess an ecolabel, like  
✓ Nordic Swan or EU Ecolabel
- Be made from  
✓ biobased materials
- ✓ Be reusable
- ✓ Be made from recycled materials
- ✓ Be biodegradable
- Have decreased  
✓ resource use during production

## The need for Care to Care selection

Our Care to Care offering showcases products with a commitment to transparency and accountability. By choosing from this carefully curated collection, you can be sure that you are reducing your negative impact on the planet while providing the best care for your patients. Currently, our Mediq Own Brand product portfolio contains 117 products with an ecolabel.



[www.mediq.com](http://www.mediq.com)

Arjen Linders,  
CEO Mediq:

By doing business responsibly and sustainably, we are what we are today, a trusted partner to healthcare professionals, payors, and patients. Our business principles are founded on integrity: we do the right thing.



at the heart of healthcare





# Index

Klinion® Wound Care	8 - 47
Klinion® Diabetes Care	48 - 51
Klinion® Personal Protection	52 - 61
Klinion® Personal Care	62 - 69
Klinion® Nursing & Facility	70 - 75
Klinion® Infusion & Vascular Access	76 - 77
Absorin® Incontinence Absorbing	78 - 83
Curion® Continence Drainage	84 -91
Cenaman® Medical Nutrition	92 - 97



# Experience the qualities of excellent wound care

**KLINION®  
WOUND CARE**  
covers it all

- ♥ A premium brand quality
- + Solutions for all stages of wound care
- ▶ Easy to use
- ♣ The best comfort for your patients
- + Fair price
- ▶ Clinically proven

## KLINION® Wound Care

Klinion® is an original Dutch brand with 100+ years of experience in wound care. Offering clinically proven products with excellent functionality, high patient comfort and competitive pricing.

We offer an extensive range of wound care dressings in medical devices Class I to IIb. Our solutions include traditional and advanced wound care (Kliniderm®), compression therapy and first aid. These products have been developed for all types of acute and chronic wounds offering a wide range of solutions including absorption of exudate, moist wound healing, fixation and compression.

Our products are carefully selected to ensure equivalent performance against leading market brands and offer excellent usability and comfort for each stage of wound healing.

Klinion® wound care covers it all!

FOAMS	Page 10
SUPERABSORBENT DRESSING	Page 14
SILICONE WOUND CONTACT LAYER	Page 16
DEBRIDE	Page 18
L-MESITRAN	Page 20
SUPER FIBER	Page 22
SKIN ADHESIVE	Page 24
ADDITIONAL ADVANCED DRESSINGS	Page 25
TRADITIONAL COMPRESSES	Page 28
X-RAY GAUZES AND SWABS	Page 31
ABSORBENT DRESSINGS	Page 33
FIXATION PLASTER ROLLS	Page 35
PLASTERS AND TAPES	Page 36
COMPRESSION	Page 40
FIXATION AND SUPPORT	Page 42
ADDITIONAL PRODUCTS	Page 46



# kliniderm® foam silicone

Gentle, conformable  
and comfortable



For which indication?

- Moderate to heavily exuding chronic and acute wounds
- May be used throughout the total healing process
- Suitable for use under compression bandaging
- Heel, Sacrum and Multisite variant are ideal for use on the heel, sacrum and hard to fixate bodyparts like elbow, breast, shoulder, under arms.

How does it work?

Kliniderm® foam silicone is a soft, conformable absorbent polyurethane foam dressing with an adhesive silicone wound contact layer and a moisture permeable film backing. The Kliniderm® foam silicone range provides patients with a gentle and comfortable dressing change experience.

What are the features?

- Consists of five layers for optimal fluid spread, absorption and retention
- Gentle silicone foam layer for gentle adherence to skin and woundbed, plus atraumatic removal
- Absorbent foam absorbs fluid into the dressing whilst maintaining a moist wound healing environment
- Nonwoven fabric transfers fluid from the foam into the superabsorbent fibres
- Superabsorbent fibres lock exudate into the dressing preventing pooling
- Vapour permeable polyurethane foam act as a barrier to fluid and micro organisms and the MVTR helps maintain an optimal moisture balance

Clinically proven

Clinical evaluations have shown that Kliniderm foam silicone is an 'effective alternative' to all other foam silicone dressings. Clinical evaluations also show significant savings were made on usage of products and total costs. (Wounds UK | Vol 11 | No 2 | 2015)



Scan QR code for  
more information and  
clinical studies

## Foams

Foam dressings ranging from regular foams to foam silicone and foam with PHMB. All are made of polyurethane and can be used for a wide range of wound care needs.

Klinion® Kliniderm® foam silicone border flexible

Offers extra flexibility and extensibility. The Kliniderm® Foam Silicone Border Flexible has unique Z- shaped cuts that allow for a more flexible dressing. This dressing can be used when extra flexibility is needed. Due to the special design the dressing is able to stay in place better during regular wear. The transparent design allows the healthcare professional to check in on the level and type of exudate without disturbing the wound. This might guide the professional in dressing changes, or whenever good wound practice dictates that the dressing should be changed. Kliniderm® Foam Silicone Border Flexible is intended for moderately to heavily exuding chronic and acute wounds and may be used throughout the healing process.

ART	REF	Size	Pieces inner carton	Pieces outer carton
3070238	40514890	7,5 x 7,5 CM	5	100
3070239	40514891	10 x 10 CM	5	100
3070280	40514892	12,5 x 12,5 CM	5	100
3070281	40514893	15 x 15 CM	5	100
3070283	40514894	10 x 20 CM	5	100
3070282	40514895	10 x 30 CM	5	100
3070284	40514896	15 x 20 CM	5	100



Klinion® Kliniderm® foam silicone

Foam silicone dressing. For the treatment of chronic and acute wounds. The foam dressing is soft, comfortable and absorbent. Creates the ideal environment for moist wound healing and avoids adherence to the wound surface. The skin-friendly, adhesive dressing enables an optimal fixation. Sterile.

ART	REF	Size	Pieces inner carton	Pieces outer carton
3016530	40514823	5 x 5 CM	5	100
3016531	40514824	10 x 10 CM	5	100
3016532	40514825	15 x 15 CM	5	100
3016533	40514826	10 x 20 CM	5	100
3016534	40514827	20 x 20 CM	5	100



Klinion® Kliniderm® foam silicone border

Adhesive foam silicone border dressing. For the treatment of chronic and acute wounds. The foam dressing is soft, comfortable and absorbent. Creates the ideal environment for moist wound healing and avoids adherence to the wound surface. The skin-friendly, adhesive dressing enables an optimal fixation. Sterile.

ART	REF	Size	Pieces inner carton	Pieces outer carton
3016535	40514828	7,5 x 7,5 CM	5	100
3016536	40514829	10 x 10 CM	5	100
3016537	40514830	12,5 x 12,5 CM	5	100
3016538	40514831	15 x 15 CM	5	100
3016539	40514832	10 x 20 CM	5	100
3016540	40514833	10 x 30 CM	5	100
3016541	40514834	15 x 20 CM	5	100







### Klinion® Kliniderm® foam silicone border multisite

Adhesive foam silicone border dressing. Intended for moderately to severely exuding chronic and acute wounds and may be used during the healing process. This multisite shape can be used on parts of the body where extra conformity is desirable. The design is specially designed to remain comfortable even on deviating contours.

ART	REF	Size	Pieces inner carton	Pieces outer carton
3067525	40514822	20 x 20 CM	5	100



### Klinion® Kliniderm® foam silicone sacrum border

Adhesive foam silicone border dressing. For the treatment of chronic and acute wounds. The foam dressing is soft, comfortable and absorbent. Creates the ideal environment for moist wound healing and avoids adherence to the wound surface. The skin-friendly, adhesive dressing enables an optimal fixation. Sterile.

ART	REF	Size	Pieces inner carton	Pieces outer carton
3016546	40514839	15 x 15 CM	5	100
3016545	40514838	18 x 18 CM	5	100
3016544	40514837	22,5 x 22,5 CM	5	100



### Klinion® Kliniderm® foam silicone heel

Adhesive foam silicone dressing. For the treatment of chronic and acute wounds. The foam dressing is soft, comfortable and absorbent. Creates the ideal environment for moist wound healing and avoids adherence to the wound surface. The skin-friendly, adhesive dressing enables an optimal fixation. Sterile.

ART	REF	Size	Pieces inner carton	Pieces outer carton
3016542	40514835	10 x 17,5 CM	5	100



### Klinion® Kliniderm® foam silicone heel border

Adhesive foam silicone border dressing. For the treatment of chronic and acute wounds. The foam dressing is soft, comfortable and absorbent. Creates the ideal environment for moist wound healing and avoids adherence to the wound surface. The skin-friendly, adhesive dressing enables an optimal fixation. Sterile.

ART	REF	Size	Pieces inner carton	Pieces outer carton
3037336	40514836	20 x 20,8 CM	5	100



### Klinion® Kliniderm® foam phmb

Sterile non-adhesive PHMB foam dressing. Consisting of a hydrophilic polyurethane foam which is designed to absorb exudate. The PHMB foam dressing contains the antimicrobial substance polyhexamethylene biguanide (PHMB), which ensures the microbiological control of the wound dressing, reducing the risks of infection and promoting the healing process.

ART	REF	Size	Pieces inner carton	Pieces outer carton
3016589	40515810	5 x 5 CM	10	160
3016590	40515811	10 x 10 CM	10	50
3016591	40515812	10 x 20 CM	10	90
3016592	40515813	15 x 15 CM	10	120
3016593	40515814	20 x 20 CM	10	60

### Klinion® Kliniderm® foam silicone lite

Foam silicone dressing. For the treatment of low exuding, chronic and acute wounds. The foam dressing is soft, comfortable and absorbent. Creates the ideal environment for moist wound healing and avoids adherence the wound surface. The skin-friendly, adhesive dressing enables an optimal fixation. Sterile.

ART	REF	Size	Pieces inner carton	Pieces outer carton
3016521	40514810	6 x 8,5 CM	5	100
3016522	40514811	10 x 10 CM	5	100
3016523	40514812	15 x 15 CM	5	100
3016524	40514813	20 x 50 CM	4	80

### Klinion® Kliniderm® foam silicone lite border

Adhesive foam silicone border dressing. For the treatment of low exuding, chronic and acute wounds. The foam dressing is soft, comfortable and absorbent. Creates the ideal environment for moist wound healing and avoids adherence to the wound surface. The skin-friendly, adhesive dressing enables an optimal fixation. Sterile.

ART	REF	Size	Pieces inner carton	Pieces outer carton
3016525	40514814	4 x 5 CM	10	100
3016526	40514815	5 x 12,5 CM	5	100
3016527	40514816	7,5 x 7,5 CM	5	100
3016528	40514817	10 x 10 CM	5	100
3016529	40514818	15 x 15 CM	5	100

### Klinion® Kliniderm® foam

Foam dressing for the treatment of chronic and acute wounds. The foam dressing is soft, comfortable and highly absorbent. Creates the ideal environment for moist wound healing and avoids adherence to the wound surface. Latex-free. Sterile.

ART	REF	Size	Pieces inner carton	Pieces outer carton
3051275	40174810	5 x 5 CM	10	100
3051276	40174811	10 x 10 CM	10	100
3051277	40174813	10 x 18 CM	10	100
3051278	40174812	15 x 15 CM	10	100
3070331	40174818	10 x 20 CM	10	100
3051294	40174814	20 x 20 CM	10	100

### Klinion® Kliniderm® foam heel

Foam dressing for the treatment of chronic and acute wounds. The foam dressing is soft, comfortable and highly absorbent. Creates the ideal environment for moist wound healing and avoids adherence to the wound surface. Latex-free. Sterile.

ART	REF	Size	Pieces inner carton	Pieces outer carton
3051293	40174820	Heel	5	40

### Klinion® Kliniderm® foam border

Foam border dressing for the treatment of chronic and acute wounds. The foam dressing is soft, comfortable and highly absorbent. Creates the ideal environment for moist wound healing and avoids adherence to the wound surface. The adhesive border enables an optimal fixation. Latex-free. Sterile.

ART	REF	Size	Pieces inner carton	Pieces outer carton
3051279	40174815	7,5 x 7,5 CM	10	100
3051290	40174816	10 x 10 CM	10	100
3051291	40174819	12,5 x 12,5 CM	10	100
3051292	40174817	15 x 15 CM	10	100



# kliniderm® superabsorbent dressing

Super absorbency, super performance,  
even under compression



**For which indication?**

- Moderate to highly exuding chronic and acute wounds
- Can be used under compression

**How does it work?**

Kliniderm® superabsorber is a four-layer superabsorbent dressing held together by a unique patented seal. The dressing has excellent absorption and retention properties compared to other superabsorbent dressings even under compression.

**What are the features?**

- Consists of 4 layers for optimal absorption and retention
- Fluid repellent backing layer minimizes the risk of strikethrough, improving wear time and patient comfort
- Superabsorbent polymers lock in fluid, bacterial and MMP's
- Intermediate layer distributes exudate evenly into the absorbent layer
- Hydrophilic wound contact layer is a gentle contact layer that protects the wound bed and allows exudate transfer
- Unique patented seal
- Excellent absorption and retention properties even under compression

**Clinically proven**

Kliniderm® superabsorber is a very cost effective wound dressing as shown in a clinical evaluation of Kliniderm® superabsorber in a care institution in the UK. The evaluation was able to show a 65% reduction in dressing expenditure and a 26% reduction in the number of dressings used over a 3-month period. An annual saving of up to £160,021. Kliniderm superabsorbent also provided higher absorption than many market leading products in free swell testing and comparable absorbency under a fixed load equivalent to 40mmHg. (Wound Essentials 2015: Vol 10 No 1)



Scan QR code for  
more information and  
clinical studies

## Superabsorbent dressings

Our Kliniderm superabsorbent dressings are an excellent choice for heavily exuding chronic and acute wounds. It has high absorption and retention properties and can be used effectively under compression. The dressing consists of four different layers: a fluid-repellent backing layer for exudate retention and supporting patient comfort, a SAP inner core to lock and retain exudate and bacteria, an intermediate layer to distribute the exudate evenly and a hydrophilic wound contact layer that gently protects the wound bed and allows exudate to pass through.

**Klinion® Kliniderm® superabsorbent dressing, sterile**

Absorbent wound dressing for heavily exuding wounds; effective moisture uptake and distribution, comfortable, conformable, effective under compression, does not adhere to the wound, does not leak due to moisture-repellent outer layer. White = wound side; green = external side. Do not cut or tear the dressing. Confirmed as protease modulator. Sterile.

ART	REF	Size	Pieces inner carton	Pieces outer carton
3016447	40511700	7,5 x 7,5 CM	50	400
3016452	40511706	10 x 10 CM	10	50
3016448	40511701	10 x 10 CM	50	400
3016453	40511707	10 x 15 CM	10	40
3051260	40511713	10 x 20 CM	10	240
3016449	40511702	10 x 20 CM	50	400
3016454	40511708	15 x 20 CM	10	40
3016450	40511703	20 x 20 CM	15	120
3016451	40511704	20 x 30 CM	10	80
3038381	40511705	20 x 40 CM	10	80



**Klinion® Kliniderm® superabsorbent dressing, non-sterile**

Non-sterile wound dressing. For use as a secondary wound dressing on moderate to heavily exuding wounds. Not suitable for use on wounds which have breached the dermis. White = wound side; green = external side. Do not cut or tear the dressing.

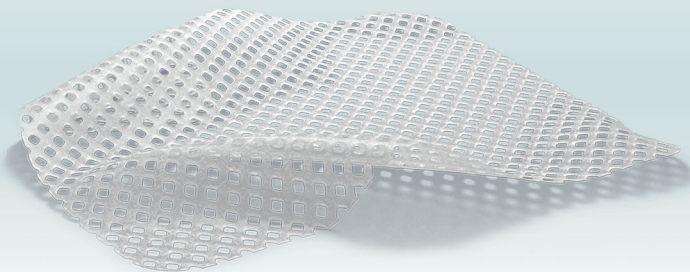
ART	REF	Size	Pieces inner carton	Pieces outer carton
3016456	40511710	10 x 10 CM	100	600
3016457	40511711	10 x 20 CM	50	300
3016458	40511712	20 x 20 CM	50	150





# kliniderm® silicone wound contact layer

## Soft contact



### For which indication?

- Wide range of exuding wounds, such as: diabetic foot ulcers, pressure ulcers, leg (venous and arterial) ulcers, first- and second-degree burns, surgical wounds, traumatic wounds
- In combination with a secondary absorbent dressing
- As a wound protective layer on non-exuding wounds
- On areas with fragile skin

### How does it work?

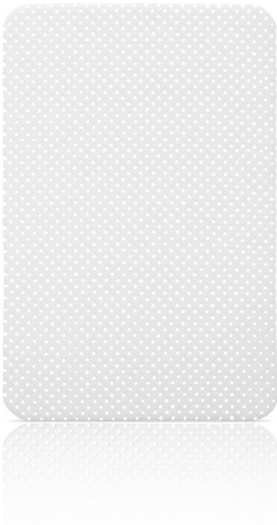
Kliniderm® silicone wound contact layer is a flexible polyurethane film coated with a soft silicone layer on one side. Its soft porous structure allows exudate to pass through easily into an outer absorbent dressing.

### What are the features?

- Flexibility of the dressing for comfortable application and reliable fixation
- Gentle silicone adhesive helps minimize the risk of pain and damage to the wound at dressing changes
- Size of the perforations in the porous dressing allows exudate to pass through easily and reduces risk of maceration
- One sided silicone layer ensures easy handling and prevents secondary dressings from sticking
- Up to 14 days wear time allowing the wound to remain undisturbed when the secondary dressing is changed
- Transparency allows for wound inspection
- Can be cut to shape to suit clinical requirements

### Clinically proven

In clinical evaluations published in Wounds UK the Kliniderm silicone wound contact layer was demonstrated to be a suitable dressing for the majority of wounds included in this evaluation. The dressing was rated above average on all parameters, and the performance of the dressing was also rated highly by the clinicians undertaking the evaluations. (Wounds UK, vol. 17, No. 1, 2021)



Scan QR code for more information and clinical studies

# Silicone wound contact layer

## Klinion® Kliniderm® silicone wound contact layer

Soft silicone wound contact layer with porous structure that allows exudate to pass into a secondary absorbent dressing. Sealing of the wound edges minimises the risk of maceration. One-sided silicone layer makes the dressing easy to use and prevents the secondary dressing from sticking to the wound contact layer. Sterile.

ART	REF	Size	Pieces inner carton	Pieces outer carton
3016573	40514880	5 x 7,5 CM	10	700
3016574	40514881	7,5 x 10 CM	10	400
3016575	40514882	10 x 18 CM	10	700
3016577	40514884	17 x 25 CM	5	200
3016576	40514883	20 x 30 CM	5	150



# kliniderm® debride

Intuitive design, gentle  
effective debridement



**For which indication?**

Mechanical debridement of complex wounds.

**How does it work?**

Kliniderm® debride is a soft monofilament polyester fiber pad used for the quick and effective mechanical debridement of complex wounds. It gently removes devitalized tissue, debris and hyperkeratosis with a unique pressure application control.

**What are the features?**

- Intuitive design for good grip
- Finished edges to prevent frying
- Finger shaped, pocket size for small deep wounds and extra control
- Monofilament fiber (for highly efficient cleansing)
- Double-sided application enables efficient usage
- Soft monofilament loops help minimizing pain and is gentle on intact tissue
- Absorbs exudate enabling effective mechanical debridement
- Removes biofilm and bacteria from the wound
- Soft haptic application for correct amount of pressure and control
- Soft edges minimizing pain
- Water-resistant backing to prevent leakage

**Clinically proven**

An evaluation conducted in the Skin Integrity Complex Wound Clinic, comparing product usage to the current debridement products used, shows effective debriding in 96% of wounds, epithelization increase from 11% to 32%, slough reduced from 26% to 8% and eschar from 4% to 0%.  
(Wounds UK | Vol 18 | No 3 | 2022)



Scan QR code for  
more information and  
clinical studies

## Debridement

Wound bed preparation is a key element to ensuring optimum wound healing. Wound debridement removes barriers such as non-viable tissue, biofilm and foreign material and/or debris from the wound bed.

Mechanical is the most common form of debridement as it is quick, safe and effective with no specialist training required.

Kliniderm® debride is designed to provide rapid, gentle, mechanical debridement. Its intuitive design is double sided with a continuous soft edge, the product is placed over a gloved hand or finger enabling improved handleability and control during debridement.

**Klinion® Kliniderm® debride**

Monofilament polyester mechanical debridant. Removes exudate, cellular debris and keratosis. Gentle on intact tissue. Medical Device. Sterile if pouch and seal are intact.

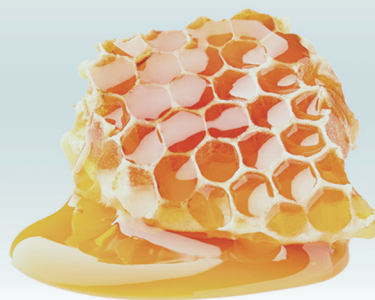
ART	REF	Size	Pieces inner carton	Pieces outer carton
3059040	40511800	14 x 10 CM	5	100
3059041	40511801	8 x 4 CM	5	60





# kliniderm® l-mesitran

More than honey



### For which indication?

- Mesitran is antimicrobial and anti-inflammatory which debrides and reduces malodour
- It can be used in all phases of wound healing and for all types of wounds

### How does it work?

Klinion® l'mesitran is a range of Medical Grade Honey (MGH) products supplemented with ingredients like vitamine E and C to stimulate wound healing. Medical grade meaning following the physiochemical standards, free of pollutants and gamma sterilized (only proven method to kill endospores (claustridium)).

### What are the features?

- Klinion® l'mesitran stimulates wound healing
- Antimicrobial properties will resolve and prevent infections
- Supplements like Vitamine E and C stimulate wound healing
- Anti inflammatory properties reduce inflammations
- Supplements Lanolin, PEG4000 en Propylene glycol maintain an optimal moist wound environment and bind water and oils to allow for better penetration in the skin
- The range consists of a honey ointment, a honey gel, hydrogel based dressings and a wound contact layer which is a non adherent synthetic gauze impregnated with a soft MGH gel

### Clinically proven

Studies show that compared to other honey products like Manuka, Mesitran has the strongest antibiofilm activity against Staphylococcus aureus. Studies show also least cytotoxicity of Mesitran compared to other honey products. In addition, Mesitran is safe to use for all kinds of patients from neonates to palliative care.

Multiple studies show effectiveness and safety of Mesitran honey product. Visit the website to check the studies: <https://mesitran.com/readarticles/>



Scan QR code for  
more information and  
clinical studies

## L-mesitran

Klinion Mesitran is a range of Medical Grade Honey (MGH) products supplemented with ingredients like vitamine E and C to stimulate wound healing. Medical grade meaning following the physiochemical standards, free of pollutants and gamma sterilized (only proven method to kill endospores (claustridium)). Klinion L-mesitran, more than honey.

### Klinion® L-Mesitran ointment

Wound ointment indicated for the removal of necrosis and debris. Cover with an appropriate secondary dressing. Replace the ointment after 1-3 days.

ART	REF	Size	Pieces inner carton	Pieces outer carton
3036571	174701	20 GR	1	14
3017022	174700	50 GR	1	12



### Klinion® L-Mesitran soft wound gel

Wound gel indicated for superficial and deep wounds. Cover with an appropriate secondary dressing. Replace the gel after 1-3 days.

ART	REF	Size	Pieces inner carton	Pieces outer carton
3036549	174705	15 GR	1	14
3017026	174706	50 GR	1	12



### Klinion® L-Mesitran hydro

Hydro-active wound dressing indicated for (superficial) acute and chronic wounds. Creates an ideal wound environment and stimulates wound healing. Transparent, adhesive, does not adhere to the wound. Can stay on the wound several (3-5) days. Packed sterile.

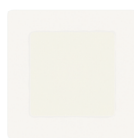
ART	REF	Size	Pieces inner carton	Pieces outer carton
3070926	174709	7,5 x 4,5 CM	5	500
3017027	174710	10 x 10 CM	5	100



### Klinion® L-Mesitran border

Hydro-active wound dressing. Antibacterial barrier, for (superficial) acute and chronic wounds. Creates an ideal wound environment and stimulates wound healing. Transparent, self-adhesive borders (waterproof), does not adhere to the wound. Can stay on the wound for 3-5 days. Packed sterile.

ART	REF	Size	Pieces inner carton	Pieces outer carton
3017028	174711	10 x 10 CM	5	100



### Klinion® L-Mesitran tulle

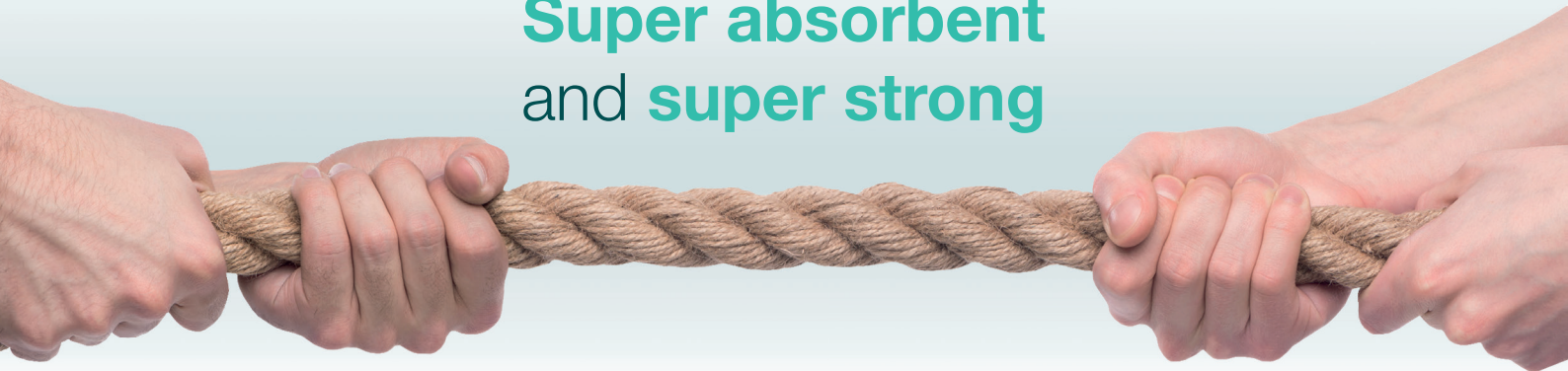
Antibacterial and non-adhering dressing, for (superficial) acute and chronic wounds. Creates an ideal wound environment and stimulates wound healing. Cover with an appropriate secondary dressing. Can stay on the wound several days, but needs replacing when the gel is no longer present. Packed sterile.

ART	REF	Size	Pieces inner carton	Pieces outer carton
3017030	174715	10 x 10 CM	10	240



# kliniderm® super fiber

Super absorbent  
and super strong



**For which indication?**

- Management of moderate to heavily exuding chronic and acute wounds which have breached the epidermis or dermis.
- Leg ulcers, pressure ulcers (stage II-IV), diabetic ulcers, surgical wounds (e.g., post-operative, wounds left to heal by secondary intent and donor sites), partial thickness burns and traumatic wounds (e.g., abrasions and lacerations).
- May be used throughout the healing process.

**How does it work?**

Kliniderm® super fiber dressing is a conformable, strong and highly absorbent dressing of 100% sodium carboxymethylcellulose fibers. It absorbs and retains wound exudate and transforms into a cohesive transparent gel to create a moist wound environment and to lock away bacteria and proteinases, reducing the risk of wound infection and maceration.

**What are the features?**

- Maintains a moist wound environment to support the wound healing process and minimizing pain and discomfort to the patient during dressing changes
- Absorbs and retains exudate to lock away bacteria and proteinases, reducing the risk of wound infection and maceration
- Removable in one piece due to unique tensile strength of the fibers
- Unique modification of fibers enables high tensile strength and therefore removes the need for additional strengthening fiber threads
- Consists of 100% sodium carboxymethylcellulose fibers
- The gelling fiber dressing does not adhere to the wound bed
- Up to 7 days wear time

**Clinically proven**

Independent comparative test reports where product specifications and performance properties such as tensile strength, absorption and retention of Kliniderm® super fiber have been tested against similar products on the market, show that Kliniderm® super fiber has a comparable absorption and retention capacity and a superior tensile strength.\*

\*report available at Mediq BV



Scan QR code for  
more information and  
clinical studies

## Super fiber

**Klinion® Kliniderm® super fiber**

Kliniderm® Super Fiber is a single-use sterile, wound dressing composed of 100% sodium carboxymethylcellulose fibers. This adaptable and highly absorbent dressing absorbs wound fluid and turns into a binding transparent gel. This maintains a moist wound environment to support the wound healing process and minimizes patient pain and discomfort during dressing changes or when the dressing is in place. The dressing absorbs and retains wound fluid, isolating harmful components in wound fluid such as bacteria and proteinases. This reduces the risk of wound infection and maceration.

ART	REF	Size	Pieces inner carton	Pieces outer carton
3069813	40511806	5 x 5 CM	10	960
3069812	40511807	10 x 10 CM	10	640
3069811	40511808	15 x 15 CM	5	280
3069810	40514809	2 x 45 CM	5	360





# Skin adhesive

## Klinion® skin adhesive

Topical skin adhesive (SurgiSeal Stylus®). Professional liquid skin adhesive containing a monomeric (2-octyl cyanoacrylate) formulation and the colourant D & C Violet #2. Klinion® skin adhesive is intended for topical applications only to hold closed easily approximated skin edges of wounds from surgical incisions including punctures from minimally invasive surgery and simple, thoroughly cleansed, trauma induced lacerations. Klinion® skin adhesive may be used in conjunction with, but not in place of, deep dermal sutures. Medical Device. Sterile if pouch and seal are intact.



ART	REF	Size	Pieces inner carton	Pieces outer carton
3063854	40115500	0,5 ML	12	576

# Additional advanced dressings

A range of advanced dressings containing alginate, hydrocolloid, films and klinitulle (paraffine dressing).

## Klinion® Kliniderm hydrocolloid

Hydrocolloid dressing for superficial wounds with low exudate, does not adhere to the wound, self-adhesive. Sterile.

ART	REF	Size	Pieces inner carton	Pieces outer carton
3036409	174302	10 x 10 CM	5	100
3036410	174303	15 x 15 CM	5	50
3036412	174304	20 x 20 CM	5	50



## Klinion® Kliniderm hydrocolloid border

Hydrocolloid dressing for superficial wounds with low exudate, does not adhere to the wound. The adhesive border enables an optimal fixation. Sterile.

ART	REF	Size	Pieces inner carton	Pieces outer carton
3036391	174201	7 x 7 CM	5	100
3036394	174202	10 x 10 CM	5	100
3036396	174203	14 x 14 CM	5	50



## Klinion® Kliniderm hydrocolloid border sacrum

Hydrocolloid dressing for superficial wounds with low exudate, does not adhere to the wound. The adhesive border enables an optimal fixation. Sterile.

ART	REF	Size	Pieces inner carton	Pieces outer carton
3036398	174204	15 x 18 CM	5	50



## Klinion® Kliniderm hydrocolloid thin

Hydrocolloid dressing for superficial wounds with low exudate, does not adhere to the wound, self-adhesive. Sterile.

ART	REF	Size	Pieces inner carton	Pieces outer carton
3036414	174101	7,5 x 7,5 CM	5	300
3036357	174102	10 x 10 CM	5	300
3036358	174103	15 x 15 CM	5	150
3036359	174104	20 x 20 CM	5	100





Klinion® Kliniderm® film

Transparent film dressing for superficial wounds with slight exudate. Creates an ideal wound climate. Transparent, semi-permeable and self-adhesive. Fixation. Sterile.

ART	REF	Size	Pieces inner carton	Pieces outer carton
3016547	40514840	4 x 5 CM	50	600
3016548	40514841	5 x 7,2 CM	50	600
3016549	40514842	10 x 10 CM	50	600
3016550	40514843	10 x 12 CM	50	600
3016551	40514844	10 x 15 CM	50	600
3016552	40514845	10 x 20 CM	50	300
3016553	40514846	10 x 25 CM	50	300
3016554	40514847	10 x 30 CM	50	300
3016555	40514848	15 x 20 CM	50	300
3016556	40514849	20 x 30 CM	50	300

Klinion® Kliniderm® film with pad

Transparent film dressing with absorbent pad for superficial wounds with slight exudate. Creates an ideal wound climate. Transparent, semi-permeable and self-adhesive. Fixation. Sterile.

ART	REF	Size	Pieces inner carton	Pieces outer carton
3016558	40514860	5 x 7,2 CM	50	600
3016559	40514861	10 x 10 CM	50	600
3016560	40514862	10 x 12 CM	50	600
3016561	40514863	10 x 15 CM	50	600
3016562	40514864	10 x 20 CM	50	300
3016563	40514865	10 x 25 CM	50	300
3016564	40514866	10 x 30 CM	50	300
3016566	40514868	15 x 20 CM	50	300
3016567	40514869	20 x 30 CM	50	300

Klinion® Kliniderm® film IV

Transparent film dressing for I.V. fixation and superficial wounds with slight exudate. Creates an ideal wound climate. Transparent, semi-permeable and self-adhesive. Fixation (I.V.). Sterile.

ART	REF	Size	Pieces inner carton	Pieces outer carton
3016557	40514855	6 x 7 CM	50	600

Klinion® Kliniderm® film IV nonwoven

Film dressing for fixation of intravenous cannula (I.V.). Semi-permeable, self-adhesive, with transparent window and nonwoven edges. Sterile.

ART	REF	Size	Pieces inner carton	Pieces outer carton
3052512	40174420	7,5 x 8,9 CM	50	300

Klinion® Kliniderm® alginate standard

Alginate dressing for moderate to heavily exuding chronic and acute wounds. Soft, clear gelling, highly absorbent and ensures intact removal. Use as primary dressing. Does not stick to the wound. REF 174515: Kliniderm alginate cavity. Sterile.

ART	REF	Size	Pieces inner carton	Pieces outer carton
3049841	174501	5 x 5 CM	10	100
3049842	174502	10 x 10 CM	10	100
3049843	174503	10 x 20 CM	5	50
3049844	174515	30 x 2 CM	5	50

Klinion® Klinitulle ointment compress

Paraffin compress. Nonwoven impregnated with white paraffin. For superficial wounds and burns. Change daily. Cover with secondary bandage. Sterile.

ART	REF	Size	Pieces inner carton	Pieces outer carton
3038895	170097	5 x 5 CM	10	240
3035382	170098	10 x 10 CM	10	240
3016980	170099	10 x 30 CM	20	200



# Traditional compresses

Our traditional compresses come in several varieties. The hydrophilic gauze dressing is ideal for cleaning wounds and wound edges. Its non-woven counterpart is a compress that is suitable as a wound dressing. Whilst the non-woven option does not adhere to the wound, the hydrophilic compress offers compressive strength. The sterile gynaecological tampon is used for moisture absorption during gynaecological procedures.

## Klinion® Klinipress hg gauze compress, sterile

Gauze swab for cleansing and covering. Highly absorbent. 100% cotton. Change daily. Sterile.

ART	REF	Size	PLY	Pieces inner carton	Pieces outer carton
3016682	111010	5 X 5 CM	8 PLY	50 x 2	3.000
3016684	111015	5 x 5 CM	8 PLY	30 x 5	3.000
3016685	111016	5 x 5 CM	12 PLY	10 x 1	200
3016686	111017	5 x 5 CM	12 PLY	100 x 1	2.000
3016687	111018	5 x 5 CM	12 PLY	50 x 2	2.000
3016689	111020	5 x 5 CM	12 PLY	20 x 5	1.200
3016699	111041	7,5 x 7,5 CM	8 PLY	50 x 2	2.000
3016701	111043	7,5 x 7,5 CM	8 PLY	30 x 5	2.250
3016691	111022	7,5 x 7,5 CM	12 PLY	20 x 5	4.000
3016679	111001	8,5 x 5 CM	8 PLY	16 x 1	384
3016680	111002	8,5 x 5 CM	8 PLY	100 x 1	1.600
3016705	111082	10 x 10 CM	8 PLY	100 x 1	1.600
3016704	111080	10 x 10 CM	8 PLY	50 x 2	2.000
3016702	111078	10 x 10 CM	8 PLY	30 x 5	1.500
3016706	111084	10 x 10 CM	12 PLY	25 x 1	400
3016707	111085	10 x 10 CM	12 PLY	100 x 1	1.600
3016708	111086	10 x 10 CM	12 PLY	50 x 2	1.600
3016710	111088	10 x 10 CM	12 PLY	20 x 5	1.200
3016711	111089	10 x 10 CM	12 PLY	10 x 10	800
3016715	111112	10 x 20 CM	12 PLY	50 x 1	600
3016716	111113	10 x 20 CM	12 PLY	40 x 2	1.280
3016725	111235	20 x 20 CM	8 PLY	10 x 5	800
3016724	111223	20 x 20 CM	16 PLY	30 x 1	480
3016726	111255	20 x 25 CM	16 PLY	25 x 1	400
3016727	111256	20 x 30 CM	16 PLY	20 x 1	160



## Klinion® Klinipress hg gauze compress, non-sterile

Gauze swab for cleansing wounds and skin. 100% cotton. Highly absorbent. Non-sterile.

ART	REF	Size	PLY	Pieces inner carton	Pieces outer carton
3016692	111025	5 x 5 CM	8 PLY	100	6.000
3016483	40512080	5 x 5 CM	8 PLY	100	24.000
3016694	111027	5 x 5 CM	12 PLY	50	1.000
3016695	111028	5 x 5 CM	12 PLY	100	1.500
3016697	111030	7,5 x 7,5 CM	8 PLY	100	2.000
3016484	40512081	7,5 x 7,5 CM	8 PLY	100	12.000
3016696	111029	7,5 x 7,5 CM	12 PLY	100	2.000
3016712	111098	10 x 10 CM	8 PLY	100	2.000
3016485	40512082	10 x 10 CM	8 PLY	100	9.000
3016713	111100	10 x 10 CM	12 PLY	50	100
3016714	111101	10 x 10 CM	12 PLY	100	1.000
3016718	111124	10 x 20 CM	12 PLY	50	500



## Klinion® Klinipress gauze drain compress

Gauze drain sponge. For covering entry sites of drains, cannulae and catheters. 100% cotton, 17 threads. Highly absorbent. Change daily. Sterile.

ART	REF	Size	PLY	Pieces inner carton	Pieces outer carton
3016982	170115	10 x 10 CM	16 PLY	50 x 1	600
3016983	170116	10 x 10 CM	16 PLY	25 x 2	600



## Klinion® Klinipress gauze compress green, non-sterile

Gauze compress anaesthesia 12 layers, for cleansing of the skin. Green colour to avoid confusion with operation gauzes. 100% cotton. Highly absorbent. Non-sterile.

ART	REF	Size	PLY	Pieces inner carton	Pieces outer carton
3016721	111182	10 x 10 CM	12 PLY	50	2.000



## Klinion® Klinipress nonwoven compress, sterile

Nonwoven swab for cleansing and covering light to non-exuding wounds. Soft and comfortable. Sterile.

ART	REF	Size	PLY	Pieces inner carton	Pieces outer carton
3017044	175001	5 x 5 CM	4 PLY	100 x 1	2.000
3017045	175002	5 x 5 CM	4 PLY	50 x 2	2.000
3017046	175003	5 x 5 CM	4 PLY	20 x 5	3.000
3016479	40512070	5 x 5 CM	4 PLY	35 x 5	5.250
3017048	175008	7,5 x 7,5 CM	4 PLY	50 x 2	2.000
3017049	175009	7,5 x 7,5 CM	4 PLY	20 x 5	2.000
3016480	40512071	7,5 x 7,5 CM	4 PLY	40 x 5	3.000
3017052	175029	10 x 10 CM	4 PLY	10 x 1	200
3017053	175030	10 x 10 CM	4 PLY	100 x 1	1.600
3017054	175031	10 x 10 CM	4 PLY	50 x 2	1.600
3017055	175033	10 x 10 CM	4 PLY	20 x 5	1.600
3016481	40512072	10 x 10 CM	4 PLY	50 x 5	2.000
3017058	175040	10 x 20 CM	4 PLY	50 x 1	600
3017059	175041	10 x 20 CM	4 PLY	25 x 2	600



Klinion® Klinipress nonwoven compress, non-sterile

Nonwoven swab for cleansing wounds and skin. Non-sterile.



ART	REF	Size	PLY	Pieces inner carton	Pieces outer carton
3017047	175004	5 x 5 CM	4 PLY	100	5.000
3017051	175024	7,5 x 7,5 CM	4 PLY	100	5.000
3017057	175035	10 x 10 CM	4 PLY	50	600
3017056	175034	10 x 10 CM	4 PLY	100	5.000
3017061	175043	10 x 20 CM	4 PLY	100	2.000

Klinion® Klinipress nonwoven compress extra, sterile

Nonwoven swab for cleansing and covering light to non-exuding wounds. Soft and comfortable. Sterile.



ART	REF	Size	PLY	Pieces inner carton	Pieces outer carton
3017070	175101	5 x 5 CM	8 PLY	100 x 1	2.000
3017076	175130	10 x 10 CM	8 PLY	100 x 1	1.600
3017077	175131	10 x 10 CM	8 PLY	50 x 2	1.600
3017079	175140	10 x 20 CM	8 PLY	50 x 1	600

Klinion® Klinipress nonwoven compress extra, non-sterile

Nonwoven swab for cleansing wounds and skin. Non-sterile.



ART	REF	Size	PLY	Pieces inner carton	Pieces outer carton
3017072	175104	5 x 5 CM	8 PLY	100	5.000
3017078	175134	10 x 10 CM	8 PLY	100	5.000

Klinion® Klinipress drain compress nonwoven

Nonwoven swab. For covering entry sites of drains, cannulae and catheters. Soft and comfortable. Change daily. Sterile.



ART	REF	Size	PLY	Pieces inner carton	Pieces outer carton
3017062	175050	5 x 5 CM	4 PLY	50 x 2	2.000
3017063	175051	10 x 10 CM	4 PLY	50 x 2	1.600

Klinion® Klinipress gynaecological tampon

Gynaecological tampon with safety cord. Filled with cotton wool. For moisture absorption during gynaecological operations. Sterile.



ART	REF	Pieces inner carton	Pieces outer carton
3016984	170901	8	96

X-ray gauzes and swabs

Assortment of OR products ranging from gauze balls to compresses. Available in gauze and non-woven varieties. All with a blue X-ray contrast wire for safety. Do not use completely unfolded.

Klinion® Kliniray gauze compress x-ray

Gauze compress x-ray. For moisture absorption during operations. Sterile.

ART	REF	Size	PLY	Pieces inner carton	Pieces outer carton
3016736	115001	5 x 5 CM	12 PLY	10 x 10	800
3016737	115005	10 x 10 CM	12 PLY	5 x 20	900
3016739	115007	10 x 10 CM	12 PLY	10 x 10	900
3016740	115020	10 x 20 CM	12 PLY	5 x 20	600
3016741	115021	10 x 20 CM	12 PLY	10 x 10	600
3016744	115046	20 x 25 CM	16 PLY	5 x 8	240
3016742	115023	10 x 20 CM	24 PLY	5 x 10	300
3016746	115048	20 x 25 CM	32 PLY	2 x 8	96



Klinion® Kliniray gauze compress x-ray, non-sterile

Gauze compress x-ray 12 ply. For moisture absorption during operations. Non-sterile.

ART	REF	Size	PLY	Pieces inner carton	Pieces outer carton
3016720	111180	10 x 10 CM	12 PLY	50	1.000
3016722	111209	10 x 20 CM	12 PLY	50	500



Klinion® Kliniray abdominal gauze compress x-ray, non-sterile

Abdominal gauze x-ray, 4 ply. For moisture absorption during operations. Non-sterile.

ART	REF	Size	PLY	Pieces inner carton	Pieces outer carton
3016731	111322	45 x 70 CM	4 PLY	50	300



Klinion® Kliniray abdominal gauze compress x-ray

Abdominal gauze compress x-ray, 4 ply. For moisture absorption during operations. Sterile.

ART	REF	Size	PLY	Pieces inner carton	Pieces outer carton
3016747	115050	45 x 30 CM	4 PLY	5 x 8	240
3016748	115060	45 x 70 CM	4 PLY	1 x 20	80
3016749	115062	45 x 45 CM	4 PLY	5 x 8	320
3016750	115063	45 x 70 CM	4 PLY	5 x 5	100
3016754	115075	45 x 70 CM	4 PLY	2 x 10	80







### Klinion® Kliniray abdominal gauze compress x-ray

Abdominal gauze compress x-ray, 4 ply, with loop. For moisture absorption during operations. Sterile.

ART	REF	Size	PLY	Pieces inner carton	Pieces outer carton
3016751	115064	45 x 45 CM	4 PLY	5 x 8	320
3016752	115065	45 x 70 CM	4 PLY	2 x 10	80



### Klinion® Kliniray nonwoven compress x-ray

Nonwoven swab x-ray. For moisture absorption during operations, REF 115611 with loop. Sterile.

ART	REF	Size	PLY	Pieces inner carton	Pieces outer carton
3016769	115601	10 x 10 CM	12 PLY	20 x 5	600
3016770	115611	45 x 45 CM	4 PLY	2 x 10	120



### Klinion® Kliniray gauze balls x-ray

X-ray detectable gauze balls for use during surgical procedures, to dissect tissue and absorb body fluids. Sterile.

ART	REF	Diameter	Pieces inner carton	Pieces outer carton
3016755	115076	Ø 2,5 CM	5 x 40	1.600
3016756	115077	Ø 3,5 CM	3 x 50	1.200
3016757	115078	Ø 4,5 CM	5 x 20	900
3016758	115079	Ø 5,5 CM	5 x 20	900



### Klinion® Kliniray preparation tupfer x-ray

Preparation balls x-ray, for use in surgical procedures for the purpose of preparation. Sterile.

ART	REF	Diameter	Pieces inner carton	Pieces outer carton
3016760	115100	Ø 0,75 x 1,5 CM	5 x 35	1.400
3016761	115101	Ø 1 x 1,5 CM	5 x 30	1.200
3016762	115102	Ø 1,5 x 2,5 CM	5 x 30	1.200

## Absorbent dressings

High-quality, non-stick absorbent dressings in different varieties: sterile and non-sterile, aluminium or polyethylene contact layer, with cotton wool or pulp filling. All designed for comfort, usability and cleanliness.

### Klinion® Klinipress exsupad, sterile

Nonwoven absorbent wound dressing for moderately exuding wounds. Soft cotton wool inner core. Effective moisture uptake and distribution, comfortable, does not leak due to fluid repellent outer layer. White = wound side; blue = external side. Change daily. Do not cut or tear the dressing. Sterile.

ART	REF	Size	Pieces inner carton	Pieces outer carton
3016950	170000	9 x 12 CM	50	400
3016951	170002	10 x 20 CM	35	280
3016952	170003	20 x 20 CM	15	120
3016953	170004	20 x 30 CM	10	80
3016954	170005	20 x 40 CM	6	48



### Klinion® Klinipress exsupad, non-sterile

Nonwoven absorbent wound dressing for moderately exuding wounds. Soft cotton wool inner core. Not suitable for use on wounds which have breached the dermis. Effective moisture uptake and distribution, comfortable, does not leak due to fluid repellent outer layer. White = wound side; blue = external side. Do not cut or tear the dressing. Non-sterile.

ART	REF	Size	Pieces inner carton	Pieces outer carton
3016979	170075	9 x 12 CM	100	600
3016976	170070	10 x 20 CM	25	600
3016977	170072	10 x 20 CM	50	300
3016978	170073	20 x 20 CM	50	300
3016974	170067	20 x 30 CM	50	150
3016975	170069	20 x 40 CM	50	150



### Klinion® Klinipress absorbent wound dressing, sterile

Nonwoven absorbent wound dressing for moderately exuding wounds. Cellulose inner core. Effective moisture uptake and distribution, comfortable, does not leak due to fluid repellent outer layer. White = wound side; blue = external side. Change daily. Do not cut or tear the dressing. Sterile.

ART	REF	Size	Pieces inner carton	Pieces outer carton
3016955	170010	10 x 10 CM	50	400
3016956	170011	10 x 20 CM	35	280
3016957	170012	15 x 25 CM	15	120
3016958	170013	20 x 20 CM	15	120
3016959	170014	20 x 30 CM	10	80
3016960	170015	20 x 40 CM	6	48



Klinion® Klinipress absorbent wound dressing, non-sterile

Nonwoven absorbent wound dressing for moderately exuding wounds. Cellulose inner core. Not suitable for use on wounds which have breached the dermis. Effective moisture uptake and distribution, comfortable, does not leak due to fluid repellent outer layer. White = wound side; blue = external side. Do not cut or tear the dressing. Non-sterile.



ART	REF	Size	Pieces inner carton	Pieces outer carton
3017081	176000	10 x 10 CM	100	600
3017082	176001	10 x 20 CM	50	300
3017083	176002	20 x 20 CM	50	300

Klinion® Klinipress novopad

Nonwoven wound compress. For superficial wounds with light to moderate exudate. With a non-adherent film layer on both sides. Fixate with bandage or an adhesive securing tape. Sterile.



ART	REF	Size	Pieces inner carton	Pieces outer carton
3017064	175060	5 x 5 CM	100 x 1	1.600
3017065	175061	10 x 10 CM	100 x 1	1.600
3017066	175062	10 x 20 CM	50 x 1	600

Klinion® Klinipress alupad

Nonwoven absorbent wound compress. For superficial wounds with light to moderate exudate. The wound contact surface has a non-adherent aluminum layer. Apply with bandage or tape. Change daily. REF 40175066; alupad trachea, compress with split for use with a trachea cannula. Sterile.



ART	REF	Size	Pieces inner carton	Pieces outer carton
3052409	40175066	8 x 10 CM	50	800
3052503	40175064	10 x 10 CM	50	800

Klinion® Klini-aid emergency dressing

First aid wound dressing for rapidly covering a bleeding wound. Absorbent compress of pressed wadding with a nonwoven contact layer. Both sides feature a fixing bandage. Do not apply bandage too tightly. Sterile.



ART	REF	Size	Pieces inner carton	Pieces outer carton
3052510	40170041	8 x 6 CM	10	200
3016962	170031	12 x 12 CM	10	120
3016963	170032	18 x 18 CM	10	120
3016964	170033	18 x 28 CM	10	120

Fixation plaster rolls

The Klinion® fixation plaster rolls range offers a practical and versatile solution for fixation of wound care dressings. Three distinct ranges with unique features and benefits are designed to give healthcare professionals greater flexibility and choice during wound care treatment. The rolls can be easily cut to the required length and are available in a variety of width options to be easily tailored to different type of wounds.

Klinion® Kliniderm® film roll

The non-sterile, semi-permeable film dressing offers a waterproof barrier against external contaminants, including viruses, bacteria, blood, and body fluids. Designed to provide protection while maintaining a moist wound healing environment due to the high Moisture vapour transmission rate (MVTR). Its versatility makes it ideal for both home care and hospital use, offering ease of application, durability, and enhanced patient comfort.

ART	REF	Size	Color	Pieces inner carton	Pieces outer carton
3016568	40514870	5 x 10 CM	Transparent	1	50
3016569	40514871	10 x 10 CM	Transparent	1	20
3016570	40514872	15 x 10 CM	Transparent	1	20



Klinion® Kliniplast fix sensitive

Kliniplast fix sensitive plaster is design using a soft silicone coating to provide additional care to sensitive and fragile skin, offering gentle adhesion without causing irritation or discomfort. The Kliniplast fix sensitive range is particularly suitable for babies, geriatric patients and patients with delicate or treated skin. The carefully selected breathable material together with the soft silicone coating ensure a pain-free removal and minimal harm to the delicate skin.

ART	REF	Size	Color	Pieces inner carton	Pieces outer carton
3070416	40294344	5 M x 5 CM	White	1	24
3070417	40294345	5 M x 10 CM	White	1	12
3070418	40294346	5 M x 15 CM	White	1	12
3070419	40294347	2 M x 10 CM	White	1	48



Klinion® Kliniplast fix stretch

Kliniplast® fix stretch is ideal for a reliable fixation of large wound dressings, catheters, drains offering a secure hold without restricting movement. Its highly stretchable material makes itsuitable for wounds on highly mobile areas of the body, ensuring both comfort and firm fixation. Kliniplast® fix stretch provides versatile and budget friendly solutions for a wide range of medical wound care needs.

ART	REF	Size	Color	Pieces inner carton	Pieces outer carton
3068646	40294340	10 M x 5 CM	White	1	24
3068645	40294341	10 M x 10 CM	White	1	24
3068648	40294342	10 M x 15 CM	White	1	16
3068647	40294343	10 M x 20 CM	White	1	48





# Plasters and tapes

Plasters and tapes: Assortment of wound plasters for everyday use, border plasters for post-operative wounds, and a range of tapes for fixating bandages available in non-woven, transparent, textile, and silk.

## Klinion® Kliniplast border

Island dressing for dry wounds or wounds with low exudation, e.g. post-operative wounds. Elastic nonwoven backing, non-adherent wound pad, rounded corners, adhesive layer, quick and easy to apply. Sterile.

ART	REF	Size	Pieces inner carton	Pieces outer carton
3052511	40294111	5 x 7 CM	10	300
3017120	294200	5 x 7 CM	50	1.200
3017121	294201	8 x 10 CM	50	300
3017122	294203	8 x 15 CM	50	300
3017123	294204	10 x 20 CM	10	120
3017124	294205	10 x 25 CM	10	120
3017125	294206	10 x 30 CM	25	150

## Klinion® Kliniplast border waterproof

Showerproof island dressing made of nonwoven fabric with a permeable polyurethane outer layer, an absorbent cotton pad and an adhesive border. For dry wounds or wounds with low exudation, e.g. post-operative wounds. Do not stretch the dressing or skin when applying. Sterile.

ART	REF	Size	Pieces inner carton	Pieces outer carton
3016515	40514200	6 x 7 CM	60	480
3016516	40514201	9 x 10 CM	40	320
3016517	40514202	9 x 15 CM	40	320
3016518	40514203	9 x 20 CM	30	180
3016519	40514204	9 x 25 CM	30	180
3016520	40514205	9 x 30 CM	30	270
3035436	40514206	9 x 35 CM	30	270

## Klinion® Kliniplast universal

Water-resistant wound plaster. Does not adhere to the wound. Latex-free. Consumer package.

ART	REF	Size	Pieces inner carton	Pieces outer carton
3017088	294100	1 M x 6 CM	1 (10 pcs of 10 CM)	100

## Klinion® Kliniplast universal

Water-resistant wound plaster on a roll. Application: small wounds with little exudate. Does not adhere to the wound. Can easily be cut to size using scissors. Latex-free.

ART	REF	Size	Pieces inner carton	Pieces outer carton
3017130	294350	5 M x 6 CM	1	12

## Klinion® Kliniplast classic

Standard wound plaster. Does not adhere to the wound. Latex-free. Consumer package.

ART	REF	Size	Pieces inner carton	Pieces outer carton
3063601	40294105	1 M x 6 CM	10	1000

## Klinion® Kliniplast classic

Fabric wound plaster on a roll. Application: small wounds with little exudate. Does not adhere to the wound. Can easily be cut to size using scissors. Latex-free.

ART	REF	Size	Pieces inner carton	Pieces outer carton
3063606	40294106	5 M x 6 CM	1	12

## Klinion® Kliniplast plaster strips

Water-resistant wound plaster strips. Does not adhere to the wound. Contains four different plaster sizes. Consumer package.

ART	REF	Size	Pieces inner carton	Pieces outer carton
3017089	294101	4 pcs 19 x 72 MM	20	2.000
		8 pcs 25 x 72 MM		
		6 pcs 9 x 38 MM		
		2 pcs Ø 22 MM		

## Klinion® Kliniplast waterproof strips

Thin, flexible, waterproof and breathable wound plaster. Does not adhere to the wound. Consumer package.

ART	REF	Size	Pieces inner carton	Pieces outer carton
3017096	294116	12 pcs 38 x 72 MM	20	2.000
		8 pcs 38 x 38 MM		

## Klinion® Kliniplast sensitive strips

Soft, comfortable and breathable wound plaster. Does not adhere to the wound. Consumer package.

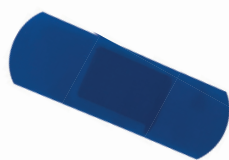
ART	REF	Size	Pieces inner carton	Pieces outer carton
3017097	294117	25 x 72 MM	20	2.000

## Klinion® Kliniplast kids

Water-resistant wound plaster. Printed with pictures, does not adhere to the wound. Latex-free. Both in hospital package and consumer package.

ART	REF	Size	Pieces inner carton	Pieces outer carton
3070163	294119	19 x 76 MM	20	400
3070164	294120	19 x 76 MM	100	1.200





Klinion® Kliniplast detectable

Wound plaster, detectable due to colour and metal strip in wound pad. Suitable for application in kitchens during food preparation and in the food processing industry. Water-resistant backing material. Colour blue.

ART	REF	Size	Pieces inner carton	Pieces outer carton
3017100	294121	25 x 76 MM	50	1.000



Klinion® Kliniplast nonwoven tape

Adhesive plaster nonwoven. Fixation of dressings, catheters and drains. Warm up by hand after applying for optimal fixation. White, breathable backing, latex-free adhesive layer.

ART	REF	Size	Pieces inner carton	Pieces outer carton
3017106	294155	9,1 M x 1,25 CM	24	240
3017107	294156	9,1 M x 2,5 CM	12	120



Klinion® Kliniplast nonwoven tape with ring

Adhesive plaster nonwoven with protective ring. Fixation of dressings, catheters and drains. Warm up by hand after applying for optimal fixation. White, breathable backing, latex-free adhesive layer.

ART	REF	Size	Pieces inner carton	Pieces outer carton
3017112	294175	5 M x 1,25 CM	18	360
3017113	294176	5 M x 2,5 CM	12	240
3017114	294179	5 M x 5 CM	12	96



Klinion® Kliniplast nonwoven tape in open dispenser

Adhesive plaster nonwoven in open dispenser. Fixation of dressings, catheters and drains. Warm up by hand after applying for optimal fixation. White, breathable backing, latex-free adhesive layer.

ART	REF	Size	Pieces inner carton	Pieces outer carton
3017105	294152	9,1 M x 2,5 CM	20	200



Klinion® Kliniplast nonwoven tape in deluxe dispenser

Adhesive plaster nonwoven in deluxe dispenser. Fixation of dressings, catheters and drains. Warm up by hand after applying for optimal fixation. White, breathable backing, latex-free adhesive layer.

ART	REF	Size	Pieces inner carton	Pieces outer carton
3046844	294154	5 x 2,5 CM	6	48



Klinion® Kliniplast textile tape

Adhesive plaster textile. Firm fixation of bandages, catheters and drains. 100% cotton backing, skin-color, latex-free adhesive layer.

ART	REF	Size	Pieces inner carton	Pieces outer carton
3017110	294166	9,1 M x 2,5 CM	12	120
3017111	294167	9,1 M x 5 CM	6	60

Klinion® Kliniplast textile tape with ring

Adhesive plaster textile with protective ring. Firm fixation of bandages, catheters and drains. 100% cotton backing, skin-color, latex-free adhesive layer.

ART	REF	Size	Pieces inner carton	Pieces outer carton
3017108	294160	5 M x 1,25 CM	18	360
3017109	294161	5 M x 2,5 CM	12	240



Klinion® Kliniplast silk tape

Adhesive plaster, artificial silk. Fixation of dressings, catheters and drains. Tearable length-wise and crosswise. Latex-free adhesive layer.

ART	REF	Size	Pieces inner carton	Pieces outer carton
3017117	294186	9,1 M x 2,5 CM	12	120



Klinion® Kliniplast silk tape with ring

Adhesive plaster, artificial silk, with protective ring. Fixation of dressings, catheters and drains. Tearable lengthwise and crosswise. Latex-free adhesive layer.

ART	REF	Size	Pieces inner carton	Pieces outer carton
3017115	294180	5 M x 1,25 CM	18	360
3017116	294181	5 M x 2,5 CM	12	240



Klinion® Kliniplast transparent tape with ring

Transparent adhesive plaster with protective ring. Fixation of dressings, catheters and drains. Tearable lengthwise and crosswise. Polyethylene backing, latex-free adhesive layer.

ART	REF	Size	Pieces inner carton	Pieces outer carton
3017118	294190	5 M x 1,25 CM	18	360
3017119	294191	5 M x 2,5 CM	12	240



Klinion® Kliniplast injection plaster

Injection plaster. Application: to cover puncture opening after vaccination or taking a venous blood sample. Also suitable for small wounds. Nonwoven backing, adhesive layer. Dispenser packaging. Easy tear-off plasters on a roll.

ART	REF	Size	Pieces inner carton	Pieces outer carton
3052162	40294375	20 x 45 MM	1 (Roll a 250 pcs)	30





# Compression

Compression bandages available in two varieties: short stretch and long stretch. Both come in a light and heavy-duty variety. Ideal for controlling oedema.

## Short stretch

### Klinion® Klinidur textelast compression bandage

A short-stretch compression bandage range designed to deliver sustained, therapeutic compression for effective edema and venous ulcer management. The bandages are crafted from 100% high-quality cotton of good durability to maintain an adequate elasticity and performance during extended use. The fabric is breathable and skin-friendly, making the bandages easy to apply and comfortable during wear. The texture of the thread allows for an easy and secure application without the need for frequent adjustments. For sustainability and cost-efficiency, the bandages are washable at 60C and reusable up to 15 times.



ART	REF	Size	Color	Pieces inner carton	Pieces outer carton
3058770	132628	5 M x 8 CM	Beige	2	50
3058771	132630	5 M x 10 CM	Beige	2	42

### Klinion® Klinidur compression bandage

Short stretch bandage for ambulatory compression therapy, provides high pressure during activity and low pressure at rest.



ART	REF	Size	Color	Pieces inner carton	Pieces outer carton
3016596	40516002	5 M x 8 CM	Dark beige	10	120
3016597	40516003	5 M x 10 CM	Dark beige	10	80
3016598	40516004	5 M x 12 CM	Dark beige	10	80

### Klinion® Klinidur cohesive compression bandage

Short stretch cohesive bandage for ambulatory compression therapy, provides high pressure during activity and low pressure at rest.



ART	REF	Size	Color	Pieces inner carton	Pieces outer carton
3067593	40511802	5 M x 6 CM	Dark beige	1	24
3067594	40511803	5 M x 8 CM	Dark beige	1	50
3067595	40511804	5 M x 10 CM	Dark beige	1	50
3067526	40511805	5 M x 12 CM	Dark beige	1	50

## Long stretch

### Klinion® Klinidur standard compression bandage

Elasticated long stretch bandage, light version.

ART	REF	Size	Color	Pieces inner carton	Pieces outer carton
3054728	132346	7 M x 8 CM	Beige	10	80
3054729	132347	7 M x 10 CM	Beige	10	70



### Klinion® Klinidur forte compression bandage

Elasticated long stretch bandage, heavy duty version.

ART	REF	Size	Color	Pieces inner carton	Pieces outer carton
3054739	132361	7 M x 8 CM	Beige	10	40
3054740	132362	7 M x 10 CM	Beige	10	40
3054727	132363	7 M x 12 CM	Beige	10	30



### Klinion® Klinidur compression bandage

Elasticated long stretch compression bandage.

ART	REF	Size	Color	Pieces inner carton	Pieces outer carton
3069724	165017	7 M x 8 CM	Dark beige	8	80
3069725	165018	7 M x 10 CM	Dark beige	8	40
3069726	165019	7 M x 12 CM	Dark beige	8	40



### Klinion® Klinidur adhesive acryl compression bandage

Elasticated lengthwise adhesive bandage, length 4,5m when stretched. 100% cotton with a polyacrylate adhesive layer on the outside.

ART	REF	Size	Color	Pieces inner carton	Pieces outer carton
3069696	132650	4,5 M x 6 CM	Dark beige	10	50
3069697	132651	4,5 M x 8 CM	Dark beige	10	50
3069698	132652	4,5 M x 10 CM	Dark beige	10	50



# Fixation and support

Range of fixation and support solutions like tubular bandages, arm slings, sling foam, cohesive bandages and abdominal girdle. To secure wound dressings and support injured body parts.

## Klinion® Klinifix cohesive fixation bandage 4m

Cohesive elastic securing bandage, white. Latex-free.

ART	REF	Size	Color	Pieces inner carton	Pieces outer carton
3016838	132377	4 M x 2.5 CM	White	10	450
3016830	132378	4 M x 4 CM	White	5	280
3038996	132379	4 M x 6 CM	White	5	280
3038997	132380	4 M x 8 CM	White	5	140
3039000	132381	4 M x 10 CM	White	5	140
3039001	132382	4 M x 12 CM	White	5	140

## Klinion® Klinifix cohesive fixation bandage 20m

Cohesive elastic securing bandage, white. Latex-free.

ART	REF	Size	Color	Pieces inner carton	Pieces outer carton
3070601	132384	20 M x 4 CM	White	1	24
3016835	132386	20 M x 6 CM	White	1	24
3016836	132387	20 M x 8 CM	White	1	24
3016837	132388	20 M x 10 CM	White	1	24
3070602	132384	20 M x 12 CM	White	1	24
3070600	132376	20 M x 6 CM	Blue	1	24
3070567	132383	20 M x 6 CM	Red	1	24

## Klinion® Klinifix elastic bandage

Elastic gauze bandage. White, 58% polyester, 42% viscose. For securing wound dressings, cannulae and padding material. 4m when stretched. Do not use directly on open wounds or damaged skin.

ART	REF	Size	Color	Pieces inner carton	Pieces outer carton
3052465	40132227	4 M x 4 CM	White	20	960
3052459	40132228	4 M x 6 CM	White	20	840
3052458	40132229	4 M x 8 CM	White	20	600
3052457	40132230	4 M x 10 CM	White	20	480
3052461	40132231	4 M x 12 CM	White	20	360

## Klinion® Klinifix non-elastic bandage

Non-elastic gauze bandage. 100% cotton. Maintains tensile strength when wet. For securing (wet) wound dressings. Do not use directly on open wounds or damaged skin.

ART	REF	Size	Color	Pieces inner carton	Pieces outer carton
3052460	40132281	4 M x 4 CM	White	20	1.440
3052464	40132282	4 M x 6 CM	White	20	1.080
3052456	40132283	4 M x 8 CM	White	20	720
3052463	40132284	4 M x 10 CM	White	20	720

## Klinion® Klinifix crepe bandage

Elastic crepe securing bandage. 100% cotton. 4m when stretched, latex-free. Particularly suitable for conical and round parts of the body. Do not apply with too much tension. Do not use directly on open wounds or damaged skin.

ART	REF	Size	Color	Pieces inner carton	Pieces outer carton
3016820	132330	4 M x 5 CM	Beige	10	40
3016821	132331	4 M x 7,5 CM	Beige	10	40
3016822	132332	4 M x 10 CM	Beige	10	40
3016824	132334	4 M x 15 CM	Beige	10	40

## Klinion® Klinifix eco-crepe bandage

Klinifix eco-crepe bandage. Elastic securing bandage. 89% cotton, 11% polyurethane fiber. Do not apply directly on open wounds or breached skin.

ART	REF	Size	Color	Pieces inner carton	Pieces outer carton
3038412	40571410	4 M x 5 CM	Beige	10	200
3038413	40571420	4 M x 7 CM	Beige	10	200
3038415	40571430	4 M x 10 CM	Beige	10	150
3038417	40571440	4 M x 15 CM	Beige	10	200

## Klinion® Klinigrip cohesive support bandage

Cohesive elastic tearable bandage, brown, length 4,5m when stretched.

ART	REF	Size	Color	Pieces inner carton	Pieces outer carton
3038970	132401	4,5 M x 6 CM	Brown	5	120
3038994	132402	4,5 M x 8 CM	Brown	5	90
3038995	132403	4,5 M x 10 CM	Brown	5	75

## Klinion® Klinigrip ideal bandage

Elastic support bandage, 100% cotton. Non-fraying, maintains elasticity even after washing (60°C). Please wash with similar colours, airdry flat. 5m when stretched. For support following treatment of strains, sprains and injuries. Do not apply directly on open wounds or breached skin. Do not apply with too much tension. Bandage clips are not intended to be applied on patients. Latex-free.

ART	REF	Size	Color	Pieces inner carton	Pieces outer carton
3016843	132440	5 M x 4 CM	White	10	40
3016844	132441	5 M x 6 CM	White	10	40
3016845	132442	5 M x 8 CM	White	10	40
3016847	132443	5 M x 10 CM	White	10	40
3016849	132444	5 M x 12 CM	White	10	40
3046591	132445	5 M x 15 CM	White	10	60
3070569	132446	5 M x 20 CM	White	10	50







Klinion® Klinigrip eco-ideal bandage

Universal support bandage. Light support bandage, 60% cotton, 39% polyamide, 1% pol-  
yurethane. Maintains elasticity even after washing (60°C). 5m when stretched. For support  
following treatment of strains, sprains and injuries.

ART	REF	Size	Color	Pieces inner carton	Pieces outer carton
3069699	132469	5 M x 6 CM	Cream	10	40
3069721	132470	5 M x 8 CM	Cream	10	40
3069722	132471	5 M x 10 CM	Cream	10	40
3069723	132472	5 M x 12 CM	Cream	10	40



Klinion® Klinifix tubular bandage

Elastic viscose tubular bandage for dressing retention and covering the skin. Latex-free.

ART	REF	Size	Color	Pieces inner carton	Pieces outer carton
3016510	40513010	10 M x 3,5 CM	White / Red line	1	32
3016511	40513011	10 M x 5 CM	White / Green line	1	20
3016512	40513012	10 M x 7,5 CM	White / Blue line	1	12
3016513	40513013	10 M x 10,75 CM	White / Yellow line	1	8
3016514	40513014	10 M x 20 CM	White / Beige line	1	6



Klinion® Klinigrip tubular tricot bandage

Knitted tubular bandage. Seamless tubular stitching, to be used to protect the skin under  
plaster of Paris or support bandages. Also for use as a bandage.

ART	REF	Size	Color	Pieces inner carton	Pieces outer carton
3016796	132215	4 M x 10 CM	Cream	1	10
3016798	132216	4 M x 12 CM	Cream	1	10
3016800	132217	4 M x 15 CM	Cream	1	10
3016802	132218	4 M x 20 CM	Cream	1	10



Klinion® Klinigrip tubular tricot bandage

Under cast or bandage. Unbleached cotton. Latex-free.

ART	REF	Size	Color	Pieces inner carton	Pieces outer carton
3016787	132101	20 M x 5 CM	Cream	1	40
3016788	132102	20 M x 7,5 CM	Cream	1	30
3016789	132103	20 M x 10 CM	Cream	1	24
3016792	132108	20 M x 30 CM	Cream	1	8



Klinion® Klinigrip abdominal support

Adjustable abdominal girdle.

ART	REF	Size	Color	Pieces inner carton	Pieces outer carton
3016857	132581	S	Cream	6	48
3016858	132582	M	Cream	6	48
3016859	132583	L	Cream	6	48
3016860	132584	XL	Cream	6	48

Klinion® Klinigrip sling

Sling supports arm or wrist, made of quilted, strong, blue foam material; easily cut to size;  
can be fastened with included Y-shaped Velcro strip.

ART	REF	Size	Color	Pieces inner carton	Pieces outer carton
3016863	132591	5,5 CM x 1,90 M	Blue	1	10
3016862	132590	5,5 CM x 12 M	Blue	2	6



Klinion® Klinigrip arm sling nonwoven

Triangular bandage, nonwoven, with safety pin. For immobilising arms or shoulders.

ART	REF	Size	Color	Pieces inner carton	Pieces outer carton
3038155	102026	96 x 96 x 136 CM	White	48	288



Klinion® Klinigrip arm sling textile

Triangular bandage, polyester, with safety pin. For immobilising arms or shoulders.

ART	REF	Size	Color	Pieces inner carton	Pieces outer carton
3038156	102027	96 x 96 x 136 CM	White	48	384



# Additional Products

To complement our innovative wound care products and wound management solutions, we also manufacture regular day to day care products that always come in handy. Like our hot and cold packs, for bruises or sore muscles. Our cold packs are ready to use, which saves you time. We also offer a range of cotton products, like washable gloves to softly and hygienically apply ointments and creams, or regular zigzag cotton and cotton balls for disinfection and cleaning.

## Klinion® Klinisport cold pack instant

Instant cold pack. Single use only. Use for cold application to bruises, strains, inflammation, headache and toothache. Important: Read information leaflet before use! Keep product out of reach of children and animals. Only for external use.

ART	REF	Size	Pieces inner carton	Pieces outer carton
3066736	40130112	15 x 21 CM	1	12

## Klinion® Klinisport cold / hot pack

Cold/hot pack. Reusable. Can be applied hot or cold. Apply cold to bruises, strains, inflammation, headache and toothache. Apply hot to muscle pain and neck, back and shoulder complaints. Important: Read information leaflet before use! Keep product out of reach of children and animals. Only for external use.

ART	REF	Size	Pieces inner carton	Pieces outer carton
3066737	40130113	10 x 12 CM	1	14
3066735	40130114	12 x 29 CM	1	12

## Klinion® Klinisoft synthetic padding

Padding material for support, compression and plaster of Paris bandaging. Made of 100% polyester fibers, permeable to air and moisture. Easy to tear.

ART	REF	Size	Pieces inner carton	Pieces outer carton
3052514	40141090	6 CM x 3 M	20	480
3052513	40141091	10 CM x 3 M	10	320
3052515	40141092	15 CM x 3 M	10	240

## Klinion® cellulose swabs

For cleaning and disinfecting the skin. Do not use on damaged skin. Suitable for use in dispenser. Non-sterile.

ART	REF	Size	Pieces inner carton	Pieces outer carton
3052494	40170094	4 x 5 CM	2 (Roll a 500 pcs)	100

## Klinion® Kliniglove cotton glove

For protection of hands and surroundings during usage of ointments and creams. 100% cotton. Can be worn on the right or left hand, leave seams on the outside. 2 gloves per pack. Washable at 30°C.

ART	REF	Size	Pieces inner carton	Pieces outer carton
3016992	170947	S	12	96
3016993	170948	M	12	96
3016994	170949	L	12	96
3016995	170950	XL	12	96

## Klinion® pretape

Foam bandage for protecting the skin and providing padding. Does not shift. Breathable and easy to tear.

ART	REF	Size	Pieces inner carton	Pieces outer carton
3063497	40132589	30 M x 10 CM	1	144

## Klinion® Klinisoft cotton zigzag

50% cotton, 50% viscose. For cleaning, disinfecting and absorbing.

ART	REF	Size	Pieces inner carton	Pieces outer carton
3052597	40124121	50 GR	1	150
3052598	40124126	500 GR	1	25

## Klinion® Klinisoft cotton balls

50% cotton, 50% viscose. For cleaning, disinfecting and absorbing.

ART	REF	Size	Pieces inner carton	Pieces outer carton
3066978	40145002	500 GR / 0,6 GR each ball	1	14

## Klinion® engels pluksel (cotton sheet for ointment)

100% cotton dressing roll for ointment treated skin. Apply the soft side to the skin. The dressing ensures that the ointment stays in place. Secure with ointment-resisting bandage (e.g. Klinifix Crepe).

ART	REF	Size	Pieces inner carton	Pieces outer carton
3052501	40170060	10 CM x 5 M	1	60
3052502	40170058	45 CM x 5 M	1	20







## KLINION® Diabetes Care

Klinion® Diabetes Care offers a complete product range of sterile and single use medical devices for people with Diabetes Mellitus. This includes lancets and pen needles in a variety in lengths and thicknesses. The pen needles can be used on most universal insulin pens.

The pen needles have a thin or extra thin wall. This thinwall technology improves insulin flow through the pen needle. A silicone coating and 5-point faceted needle ensure virtually painless injection requiring less force. The right needle can be prescribed depending on personal preference and the specific needs of the individual client. Each size of the pen needle has unique colour which is on both the packaging of the box, and pen needle itself. Even the protective cap of the pen needle has the same colour, making it clearly recognisable.

KDC PEN NEEDLES \_\_\_\_\_ Page 50

KDC LANCETS \_\_\_\_\_ Page 51



# KDC Pen Needles

Klinion® Pen Needles combine cutting-edge technology with rigorous quality assurance to improve safety, ease of use, and performance.

- 5-Bevel Ultra-Sharp Tip – The 5- beveled, ultra - sharp tip enables easier skin penetration, reducing injection pain compared to regular needles.
- Double Silicone Coating – Double - layer silicone coating ensures smoother needle insertion, minimizing pain during the injection process.
- Thin Wall Technology – Less pressing force reduce injection pain and injection duration, dramatically reduce the risk of insulin leakage
- Rigorous Quality Assurance – Every needle undergoes CCD inspection to guarantee a burr-free tip and consistent sharpness. Additionally, our air blow test ensures unobstructed flow, preventing blockages. These measures uphold the highest standards of performance and reliability.

## Klinion® soft fine plus pen needles

5 bevel, single-use, sterile pen needles for insulin injection. The pen needles can be used with most universal pen injectors. Standard feature of Klinion® pen needles is the Quint-Tip, designed for smoother and gentler injection.

ART	REF	Size	Pieces inner carton	Pieces outer carton
3068281	5265	0,23 MM (32 G) x 4 MM	110	4.400
3068282	5264	0,23 MM (32 G) x 5 MM	110	4.400
3068284	5266	0,25 MM (31 G) x 5 MM	110	4.400
3068283	5268	0,23 MM (32 G) x 6 MM	110	4.400
3068285	5260	0,25 MM (31 G) x 6 MM	110	4.400
3068361	5269	0,23 MM (32 G) x 8 MM	110	4.400
3068286	5261	0,25 MM (31 G )x 8 MM	110	4.400
3068287	5263	0,33 MM (29 G) x 12 MM	110	4.400

## Klinion® soft fine plus (duo) safety pen needles

5 bevel, single-use, sterile safety (duo) pen needles for insulin injection. After injection and withdrawal from the body, the safety shield automatically covers the needle on front (and back) side to minimize the risk of accidental needle sticks. The pen needles can be used with most universal pen injectors.

ART	REF	Size	Pieces inner carton	Pieces outer carton
3068672	5290	5 MM (30 G)	100	1.200
3068673	5291	8 MM (30 G)	100	1.200
3068674	5295	5 MM (30 G)	100	1.200
3068675	5296	8 MM (30 G)	100	1.200

# KDC Lancets

## Klinion® soft fine colour lancets

3 bevel, single-use, sterile personal lancet. Intended to be used with a lancing device by lay users for capillary blood sampling.

ART	REF	Size	Pieces inner carton	Pieces outer carton
3068370	5936	0,36 MM (28 G)	110	11.000
3068371	5941	0,36 MM (28 G)	210	10.500
3068372	5940	0,31 MM (30 G)	110	11.000
3068373	5939	0,31 MM (30 G)	210	10.500

## Klinion® safety (plus) lancet

3 bevel, single-use, sterile safety (plus) lancets designed for capillary blood sampling from the fingertip of patients for most common blood test like glucose level, hemoglobin, cholesterol, coagulation, blood type studies and so on. The needle will automatically be retracted into the device upon use to reduce accidental needlestick injury. The lancet with a self-disabled feature eliminates reuse.

ART	REF	Size	Pieces inner carton	Pieces outer carton
3069671	5981	1,5 MM (30 G)	100	2.000
3069672	5982	1,8 MM (30 G)	100	2.000
3069673	5986	1,5 MM (30 G)	100	1.000
3069674	5987	1,8 MM (30 G)	100	1.000







# KLINION® Personal Protection

Klinion® Personal Protection offers a range of products that are being worn or used by healthcare professionals to minimise exposure to hazards in case of workplace accidents, reducing injuries and illnesses. The assortment includes gloves, gowns, aprons, face masks and other PPE, with the purpose to reduce these risks to acceptable levels. These items will impose a barrier between the wearer/user and the working environment, giving protection from harmful elements such as fluids, bacteria, fungi, viruses and chemicals commonly used in healthcare environments.

Our range of Klinion® Personal Protection nitrile gloves for example serve a very broad purpose, since these are certified both as Personal Protective Equipment (PPE) and Medical Device Regulation (MDR).

All products are available in commonly used sizes and colors. On the packaging you will find specific information about the intended use of each product.

NITRILE GLOVES	Page 54
LATEX GLOVES	Page 56
PE GLOVES	Page 56
VINYL GLOVES	Page 57
MASKS	Page 57
APRONS	Page 58
GOWNS	Page 59
OTHER	Page 60

# Nitrile gloves

Nitrile gloves stand out as versatile medical gloves suitable for various applications. Highly recommended for a broad spectrum of uses such as chemotherapy, patient care, managing bodily fluids, and cleaning tasks, these gloves are a reliable choice. In situations with a high risk of infection or cross-contamination, nitrile gloves offer a safe solution. Nitrile gloves are tough and resistant to tears, punctures and chemicals and ensures high protection against viruses and bacteria while preserving fine tactile sensitivity, making them an ideal option for healthcare professionals.

## Standard nitrile gloves

### Klinion® nitrile ultra comfort examination gloves

Disposable, latex-free, powder-free examination gloves made of nitrile butadiene rubber. The products are made from a thin & soft material, that provides a better tactile sensitivity. The Klinion® Personal Protection examination gloves are intended to be worn on the hand for medical purposes and to help prevent contamination between patient and examiner.

ART	REF	Size	Color	Pieces inner carton	Pieces outer carton
3050882	102606	XS	Blue	150	1.500
3050883	102607	S	Blue	150	1.500
3050884	102608	M	Blue	150	1.500
3050885	102609	L	Blue	150	1.500
3050886	102610	XL	Blue	150	1.500

### Klinion® nitrile ultra comfort examination gloves

Disposable, latex-free, powder-free examination gloves made of nitrile butadiene rubber. The products are made from a thin & soft material, that provides a better tactile sensitivity. The Klinion® Personal Protection examination gloves are intended to be worn on the hand for medical purposes and to help prevent contamination between patient and examiner.

ART	REF	Size	Color	Pieces inner carton	Pieces outer carton
3050887	102601	XS	White	150	1.500
3050888	102602	S	White	150	1.500
3050889	102603	M	White	150	1.500
3050890	102604	L	White	150	1.500
3050891	102605	XL	White	150	1.500

### Klinion® nitrile ultra comfort examination gloves

Disposable, latex-free, powder-free examination gloves made of nitrile butadiene rubber. These gloves not only provide a superior tactile sensitivity due to their thin and soft material but also undergo rigorous testing against chemotherapy drugs. The Klinion® Personal Protection examination gloves are intended to be worn on the hand for medical purposes and to help prevent contamination between patient and examiner.

ART	REF	Size	Color	Pieces inner carton	Pieces outer carton
3067075	103525	XS	White	150	1.500
3067200	103526	S	White	150	1.500
3067201	103527	M	White	150	1.500
3067202	103528	L	White	150	1.500
3067203	103529	XL	White	150	1.500

### Klinion® nitrile ultra comfort examination gloves

Disposable, latex-free, powder-free examination gloves made of nitrile butadiene rubber. These gloves not only provide a superior tactile sensitivity due to their thin and soft material but also undergo rigorous testing against chemotherapy drugs. The Klinion® Personal Protection examination gloves are intended to be worn on the hand for medical purposes and to help prevent contamination between patient and examiner.

ART	REF	Size	Color	Pieces inner carton	Pieces outer carton
3060938	103520	XS	Blue	100	1.000
3060939	103521	S	Blue	100	1.000
3060970	103522	M	Blue	100	1.000
3060971	103523	L	Blue	100	1.000
3060972	103524	XL	Blue	100	1.000

## Accelerator-free nitrile gloves

### Klinion® nitrile sensitive soft examination gloves

Disposable, latex-free, powder-free examination gloves made of nitrile butadiene rubber with no sulphur and/or accelerators. Klinion® Personal Protection sensitive soft nitrile gloves have a low-dermatitis potential known to reduce potential risk for users sensitive to chemical additives. The Klinion® Personal Protection examination gloves are intended to be worn on the hand for medical purposes and to help prevent contamination between patient and examiner.

ART	REF	Size	Color	Pieces inner carton	Pieces outer carton
3070624	202470	XS	Sky blue	150	1.500
3070625	202471	S	Sky blue	150	1.500
3070626	202472	M	Sky blue	150	1.500
3070627	202473	L	Sky blue	150	1.500
3070628	202474	XL	Sky blue	150	1.500

### Klinion® nitrile ultra safe examination gloves

Disposable, latex-free, powder-free examination gloves made of nitrile butadiene rubber. When better protection is needed than for basic examinations. The Klinion® Personal Protection examination gloves are intended to be worn on the hand for medical purposes and to help prevent contamination between patient and examiner.

ART	REF	Size	Color	Pieces inner carton	Pieces outer carton
3050934	165040	XS	Blue	150	1.500
3050935	165041	S	Blue	150	1.500
3050936	165042	M	Blue	150	1.500
3050937	165043	L	Blue	150	1.500
3050938	165044	XL	Blue	150	1.500

### Klinion® nitrile sensitive examination gloves

Disposable, latex-free, powder-free examination gloves made of nitrile butadiene rubber with no sulphur and/or accelerators. Klinion® Personal Protection sensitive nitrile gloves have a low-dermatitis potential known to reduce potential risk for users sensitive to chemical additives. The Klinion® Personal Protection examination gloves are intended to be worn on the hand for medical purposes and to help prevent contamination between patient and examiner. LCA calculations were performed for these products.

ART	REF	Size	Color	Pieces inner carton	Pieces outer carton
3050658	102470	XS	Indigo	150	1.500
3050659	102471	S	Indigo	150	1.500
3050671	102472	M	Indigo	150	1.500
3050673	102473	L	Indigo	150	1.500
3050674	102474	XL	Indigo	150	1.500





Klinion® nitrile sensitive long examination gloves

Disposable, latex-free, powder-free examination gloves in a long version, made of nitrile butadiene rubber with no sulphur and/or accelerators. Klinion® Personal Protection sensitive nitrile gloves have a low-dermatitis potential known to reduce potential risk for users sensitive to chemical additives. The Klinion® Personal Protection examination gloves are intended to be worn on the hand for medical purposes and to help prevent contamination between patient and examiner. LCA calculations were performed for these products.



ART	REF	Size	Color	Pieces inner carton	Pieces outer carton
3051843	102488	XS	Indigo	150	1.500
3050618	102484	S	Indigo	150	1.500
3050655	102485	M	Indigo	150	1.500
3050656	102486	L	Indigo	150	1.500
3050657	102487	XL	Indigo	150	1.500

Latex gloves

Latex gloves prove to be an excellent option for both medical and protective purposes. Designed to fit snugly like a second skin, these gloves facilitate unrestricted movement of the fingers, offering a high level of touch sensitivity and a reliable grip. Particularly well-suited for patient care scenarios where cross-contamination is a concern, latex gloves ensure both comfort and security. Choose latex gloves for a seamless blend of dexterity, touch sensitivity, and effective protection.

Klinion® latex polymercoated examination gloves

Disposable, powder-free, latex polymercoated examination gloves. The polymer coating facilitates the donning and doffing of the glove. The Klinion® Personal Protection latex examination gloves are intended to be worn on the hand for medical purposes and to help prevent contamination between patient and examiner.



ART	REF	Size	Color	Pieces inner carton	Pieces outer carton
3051438	102645	XS	Ivory	100	1.000
3051439	102646	S	Ivory	100	1.000
3051440	102647	M	Ivory	100	1.000
3051441	102648	L	Ivory	100	1.000
3051443	102649	XL	Ivory	100	1.000

PE gloves

Klinion® PE gloves

Disposable transparent gloves made of Polyethylene in a smooth and textured option. The Klinion® Personal Protection disposable PE gloves are intended to be worn on the hand to help prevent contamination between patient and wearer.



ART	REF	Size	Color	Pieces inner carton	Pieces outer carton
3025534	522100	One size Smooth	Transparant	500	5.000
3025535	522102	One size Textured	Transparant	500	5.000

Vinyl gloves

Vinyl gloves are cost-effective substitutes for latex and nitrile options. These gloves are ideal for personal hygiene tasks like bed bathing and skincare, as the smooth surface of the gloves provides a gentle touch on the skin. Easy donning and comfortable to wear because of high stretch and flexibility of the vinyl material. Well-suited for personal care and low-risk tasks, our gloves prioritize user safety with only phthalate-free versions.

Klinion® vinyl phthalate-free examination gloves

Disposable, latex-free, phthalate-free, powder-free vinyl examination gloves. The Klinion® Personal Protection examination gloves are intended to be worn on the hand for medical purposes and to help prevent contamination between patient and examiner.

ART	REF	Size	Color	Pieces inner carton	Pieces outer carton
3037665	75685220	XS	Clear	100	1.000
3068662	75685221	S	Clear	100	1.000
3068663	75685222	M	Clear	100	1.000
3068664	75685223	L	Clear	100	1.000
3068665	75685224	XL	Clear	100	1.000



Klinion® long vinyl phthalate-free examination gloves

Disposable, latex-free, phthalate-free, powder-free vinyl examination gloves in a long version. The Klinion® Personal Protection examination gloves are intended to be worn on the hand for medical purposes and to help prevent contamination between patient and examiner.

ART	REF	Size	Color	Pieces inner carton	Pieces outer carton
3068666	75685129	XS	Clear	100	1.000
3068667	75685130	S	Clear	100	1.000
3068668	75685131	M	Clear	100	1.000
3068669	75685132	L	Clear	100	1.000
3068680	75685133	XL	Clear	100	1.000



Masks

Klinion® FFP2 particle filtering half mask

Disposable white 5 layer filtration mask, consists of PP nonwoven fabric, PP melt-blown fabric, spunlaced nonwoven fabric, nose clip, ear loops and hook.

ART	REF	Size	Color	Pieces inner carton	Pieces outer carton
3065312	552710	23 x 12 cm	White	10	1.200



Klinion® IIR medical face mask

Disposable 3 layer face mask with earloops to protect the user from contamination from particles or liquid splashes.

ART	REF	Size	Color	Pieces inner carton	Pieces outer carton
3065314	522720	17,5 x 9,5 cm	Blue	50	2.000



# Aprons

## Klinion® PE apron short sleeve

Klinion® Personal Protection disposable aprons are made of Polyethylene and available with a short sleeve. The aprons are intended to be used as barrier protection against harmless fluids and dirt. Protection against general and minimal risks only, which do not expose user to temperatures > 50°C or to dangerous impacts.

ART	REF	Size & Thickness	Color	Primary pack	Pieces inner carton	Pieces outer carton
3025567	522705	120 x 98 CM 0.03 MM	Transparent	Folded in Box	30	150

## Klinion® PE apron long sleeve

Klinion® Personal Protection disposable aprons are made of Polyethylene with a long sleeve and a thumb loop design, that prevents the sleeve to roll up during examination. The aprons are intended to be used as barrier protection against harmless fluids and dirt. Protection against general and minimal risks only, which do not expose user to temperatures > 50°C or to dangerous impacts.

ART	REF	Size & Thickness	Color	Primary pack	Pieces inner carton	Pieces outer carton
3025568	522706	98 x 120 CM 0.03 MM	Blue	Folded in Box	20	100
3046610	522706-1	98 x 140 CM 0.03 MM	Blue	Folded in Box	15	75

## Klinion® PE apron sleeveless

Klinion® Personal Protection disposable aprons are made of Polyethylene and available in different sizes & thickness. The aprons are intended to be used as barrier protection against harmless fluids and dirt. Protection against general and minimal risks only, which do not expose user to temperatures > 50°C or to dangerous impacts.

ART	REF	Size & Thickness	Color	Primary pack	Pieces inner carton	Pieces outer carton
3025536	522110	110 x 80 CM 0.018 MM	White embossed	Folded in Box	100	1.000
3025537	522130	125 x 80 CM 0.018 MM	White embossed	Folded in Box	100	1.000
3025538	522140	140 x 80 CM 0.018 MM	White embossed	Folded in Box	80	800
3025539	522160	165 x 80 CM 0.018 MM	White embossed	Folded in Box	70	700
3025739	522700	117 x 71 CM 0.018 MM	White	Folded in Box	100	500
3025565	522700-1	117 x 71 CM 0.023 MM	White	Folded in Box	100	500
3025740	522701	125 x 81 CM 0.0195 MM	Transparent	Folded in Box	50	500
3025741	522702	125 x 81 CM 0.0195 MM	Transparent	Roll in box	70	420
3025566	522701-1	125 x 81 CM 0.025 MM	Transparent	Folded in Box	50	500
3025742	522703	160 x 90 CM 0.019 MM	White	Folded in Box	70	420
3025743	522704	140 x 80 CM 0.031 MM	White	Folded in Box	70	420
3025744	522707	150 x 80 CM 0.0195 MM	Transparent	Roll in box	50	500
3025745	522708	150 x 80 CM 0.0195 MM	Transparent	Folded in Box	40	400
3049840	522709	160 x 90 CM 0.03 MM	White	Folded in Box	70	420

# Gowns

## Klinion® non-woven visitor gown

Disposable visitor gown, made of Non-Woven (Spunbond) material with buttons on the front. Klinion® Personal Protection visitor gowns help to prevent contamination between wearer and patient.

ART	REF	Size	Color	Pieces inner carton	Pieces outer carton
3025543	522220	One size	White	1	50

## Klinion® isolation gowns

Disposable isolation gowns, made of Non-Woven (Spunbond) material with neckties and an open cuff. Klinion® Personal Protection isolation gowns help to prevent contamination between wearer and patient.

ART	REF	Size/Length	Color	Pieces inner carton	Pieces outer carton
3027535	741251	M (114 CM)	Blue	10	50
3027536	741252	XL (142 CM)	Blue	10	50

## Klinion® isolation gowns

Disposable isolation gowns, made of Non-Woven (Spunbond) material with neckties and elastic cuffs. Klinion® Personal Protection isolation gowns help to prevent contamination between wearer and patient.

ART	REF	Size/Length	Color	Pieces inner carton	Pieces outer carton
3064759	522210	M (125 CM)	Blue	10	50
3025544	522230	L (118 CM)	Yellow	10	50
3037026	1921-00	L (125 CM)	Yellow	10	50

## Klinion® isolation gowns

Disposable isolation gowns, made of Non-Woven (Spunbond) material with velcro neck closure and knitted cuffs. Klinion® Personal Protection Isolation gowns help to prevent contamination between wearer and patient.

ART	REF	Size/Length	Color	Pieces inner carton	Pieces outer carton
3026975	702101	M (114 CM)	Blue	10	50
3026989	706144	L (134 CM)	Blue	10	50
3038998	706145	XL (142 CM)	Blue	10	50

## Klinion® impervious isolation gowns

Disposable impervious isolation gowns, made of Non-Woven (Spunbond) with a layer of Polyethylene. With neckties and knitted cuffs. Klinion® Personal Protection impervious isolation gown help to prevent contamination between wearer and patient. The garments combine effective fluid resistance with wearer comfort. These gowns are ideal for patient contact, decontamination or general clean-up tasks, with a high risk on splatters.

ART	REF	Size/Length	Color	Pieces inner carton	Pieces outer carton
3025547	522240	M (115 CM)	Yellow	1	50
3025550	522250	L (135 CM)	Yellow	1	50







**Klinion® impervious isolation gowns**

Disposable impervious isolation gowns, made of Non-Woven (Spunbond) with a layer of Polyethylene. With velcro neck closure and knitted cuffs. Klinion® Personal Protection impervious isolation gown help to prevent contamination between wearer and patient. The garments combine effective fluid resistance with wearer comfort. These gowns are ideal for patient contact, decontamination or general clean-up tasks, with a high risk on splatters.

ART	REF	Size/Length	Color	Pieces inner carton	Pieces outer carton
3027534	741244	M (114 CM)	Yellow	10	50
3027533	741243	L (134 CM)	Yellow	10	50
3026974	702100	XL (144 CM)	Yellow	10	50



**Other**

**Klinion® colonoscopy short**

Disposable shorts made of non-woven material with slit for colonoscopy. The short has an elastic waistband.

ART	REF	Size	Color	Inner carton	Outer carton
3026979	703073	One size	Dark blue	150	150



**Klinion® shoe covers**

Disposable shoe covers made of Polyethylene (522610) or Polypropylene with anti-skid layer (522620). Klinion® Personal Protection disposable shoe covers help to prevent contamination between wearer and patient.

ART	REF	Size	Color	Pieces inner carton	Pieces outer carton
3025564	522620	40 x 16 CM	Blue	100	1.000
3025563	522610	36 x 15 CM	Blue	100	2.000



**Klinion® sleeve cover**

Disposable sleeve cover, made of Polyethylene. Klinion® Personal Protection disposable sleeve covers are intended to be used as barrier protection against harmless fluids and dirt. Protection against general and minimal risks only, which do not expose user to temperatures > 50°C or to dangerous impacts.

ART	REF	Size	Color	Pieces inner carton	Pieces outer carton
3025562	522510	One size	White	100	2.000
3026988	705215	One size	Blue	100	100



**Klinion® bouffant cap**

Disposable bouffant crimp caps, made of Polypropylene and available in blue, green and white. Klinion® Personal Protection disposable bouffant caps helps to prevent contamination between wearer and patient.

ART	REF	Size	Color	Pieces inner carton	Pieces outer carton
3025552	522310	53 CM	Blue	100	1.000
3025553	522320	53 CM	White	100	1.000
3025554	522330	53 CM	Green	100	1.000





# KLINION® Personal Care

Klinion® Personal Care offers a range of innovative and efficient hair and skin care products using sustainable ingredients that do not compromise on performance. Good personal care products support the skin condition of healthcare professionals and their patients, therefore to avoid skin damage and related health risks, skin needs to be treated with the right products. By using the latest technology and experience we deliver products that meet market needs and consumer expectations.

Klinion® Personal Care offers you a wide range of products that are pH neutral, dermatologically tested and have natural caring components. From ready-to-use wash gloves with moisturizing and skin-supporting lotions to barrier cream and zinc ointment that can be used as a protective method to keep the patients' skin intact.

Klinion® Personal Care can be easily identified by colour and its related function: green for cleaning the skin, blue for moisturizing the skin, and purple for protecting the skin against possible damage.

WASHING WITHOUT WATER \_\_\_\_\_ Page 64

DRY WASH GLOVES \_\_\_\_\_ Page 65

SKIN CLEANING \_\_\_\_\_ Page 66

WASHING WITH WATER \_\_\_\_\_ Page 66

SKIN HYDRATION \_\_\_\_\_ Page 68

SKIN PROTECTION \_\_\_\_\_ Page 69



# Washing without water

Klinion® rinse-free products effectively cleanse, hydrate, calm, and protect the skin. Specifically developed to address the needs of incontinence care and elderly dry skin, this product line ensures comprehensive and gentle skincare.

## Klinion® plastic-free wash wipes – perfume free

Plastic-free, skin pH-neutral, waterless bodywash wipes for gentle cleansing that can be heated in a microwave or controlled-temperature thermal cabinet. The Klinion® Personal Care body wash wipes are suitable for body cleansing without the need for soap and water.



ART	REF	Size	Pieces inner carton	Pieces outer carton	Care to care
3070298	4704	4 PCS	4	24(x4 PCS)	Yes
3070299	4708	8 PCS	8	24(x8 PCS)	Yes

## Klinion® plastic-free lotion wipes

Plastic-free, skin pH-neutral, lotion wipes for gentle cleansing. The Klinion® Personal Care lotion wipes are suitable for body cleansing without the need for soap and water.



ART	REF	Size	Pieces inner carton	Pieces outer carton	Care to care
3070320	5610	50 PCS	50	12 (x50 PCS)	Yes

## Klinion® wash gloves – perfumed

Disposable perfumed non-woven embossed washing glove for gentle cleansing that can be heated in a microwave or controlled-temperature thermal cabinet. The Klinion® Personal Care wash gloves are suitable for total body cleansing without the need for soap and water.



ART	REF	Size	Pieces inner carton	Pieces outer carton
3070201	3510	5 PCS	1 (x5 PCS)	40 (x5 PCS)
3070200	3500	8 PCS	1 (x8 PCS)	25 (x8 PCS)

## Klinion® wash gloves – perfume free

Disposable non-woven embossed washing glove for gentle cleansing that can be heated in a microwave or controlled-temperature thermal cabinet. The Klinion® Personal Care wash gloves are suitable for total body cleansing without the need for soap and water.



ART	REF	Size	Pieces inner carton	Pieces outer carton
3070205	3555	5 PCS	1 (x5 PCS)	40 (x5 PCS)
3070204	3550	8 PCS	1 (x8 PCS)	25 (x8 PCS)

## Klinion® wash gloves basic – perfume free

Disposable non-woven Needle punched washing glove for gentle cleansing that can be heated in a microwave or controlled-temperature thermal cabinet. The Klinion® Personal Care wash gloves are suitable for total body cleansing without the need for soap and water.

ART	REF	Size	Pieces inner carton	Pieces outer carton
3070203	3525	5 PCS	1 (x5 PCS)	40 (x5 PCS)
3070202	3520	8 PCS	1 (x8 PCS)	25 (x8 PCS)



## Klinion® wash wipes – perfume free

Skin pH-neutral, waterless bodywash wipes for gentle cleansing that can be heated in a microwave or controlled-temperature thermal cabinet. The Klinion® Personal Care body wash wipes are suitable for body cleansing without the need for soap and water.

ART	REF	Size	Pieces inner carton	Pieces outer carton	Care to care
3070234	3704	4 PCS	1 (x4 PCS)	24 (x4 PCS)	Yes
3070235	3708	8 PCS	1 (x8 PCS)	24 (x8 PCS)	Yes



## Klinion® shampoo cap

Rinse-free shampoo caps that can be heated in a microwave or in a controlled-temperature thermal cabinet. Manufactured using a soft non-woven fabric impregnated with a non-alcoholic cleansing and conditioning solution. The Klinion® Personal Care hairfresh cap is suitable for cleansing of hair without the need for soap and water.

ART	REF	Size	Pieces inner carton	Pieces outer carton
3050427	3601	One size	1	30



## Klinion® lotion wipes

Skin pH-neutral, lotion wipes for gentle cleansing. The Klinion® Personal Care lotion wipes are suitable for body cleansing without the need for soap and water.

ART	REF	Size	Pieces inner carton	Pieces outer carton
3070236	4610	50 PCS	1 (x50 PCS)	12 (x 50 PCS)

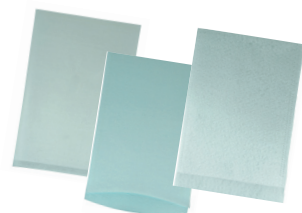


# Dry wash gloves

## Klinion® disposable dry wash gloves

Disposable dry wash gloves are made of soft, absorbent and durable materials. Available in different versions and colours. The gloves can be used in combination with Klinion® wash cream and Klinion® wash foam

ART	REF	Size (+- )	Material	Pieces inner carton	Pieces outer carton
3049659	3571	15 x 22 CM	Molton	50	1.000
3060725	3581	15 x 22 CM	Airlaid PE	50	1.000
3060726	3590	15 x 23 CM	Viscose, polyester	50	1.000



# Skin cleaning

## Klinion® wash & care foam

Klinion® Personal Care wash & care foam is a foam for cleaning the skin in case of stubborn dirt or faeces. The foam is pH neutral, gives no skin irritation and is therefore suitable for all skin types. The foam has a preventive and healing effect; also suitable for older, sensitive and dry skin.

ART	REF	Size	Primary pack	Pieces outer carton
3070430	3800	400 ML	Spray can	6

## Klinion® wash cream

Wash cream for cleaning the skin without water, pH 5,5. The Klinion® Personal Care body wash cream is a good alternative to soap and water if a patient is bedridden as it is not necessary to rinse the cream off after application. A suitable amount should be placed on either a dry or moist single use cloth or napkin and massaged into the skin. Alternatively, it can be applied directly onto the skin. There is no need to apply further moisturising agents onto the skin after using Klinion wash cream.

ART	REF	Size	Primary pack	Pieces outer carton	Care to care
3015684	30808409	600 ML	Bottle	10	Yes

# Washing with water

The range of skin-pH neutral cleansing products designed for hand, body and hair. Our mild formulations are developed to maintain the skin's natural barrier, ensuring effective cleansing whether during handwashing, showering or bathing. Certified with Nordic Swan ecolabel, our products meet high environmental standards. The products ideal for both normal and dry skin types.

## Klinion® hair body hands

Liquid soap for hair, body and hands, pH 4,5. The Klinion® Personal Care hair body hands is a liquid 3-in-1 wash gel that is gentle and nourishing for hair, body and hands. Cost-effective and practical as it covers every need for soap at once. The natural vegetable oils are moisturising and nourishing, preventing the skin from drying out without interfering with its natural moisture and elasticity levels.

ART	REF	Size	Primary pack	Pieces outer carton	Care to care
3015693	30808418	30 ML	Tube	36	Yes
3015694	30808419	600 ML	Bottle	10	Yes
3015692	30808417	1000 ML	Bottle	6	Yes

## Klinion® hand soap liquid

Liquid soap for hands, pH 5,0. The Klinion® Personal Care Hand soap liquid is suitable for hand washing. The soap lasts long and is easy to rinse off.

ART	REF	Size	Primary pack	Pieces outer carton	Care to care
3015698	30808424	600 ML	Bottle	10	Yes
3015699	30808425	1000 ML	Bottle	6	Yes

## Klinion® sensitive & intimate

Liquid soap for sensitive skin and intimate hygiene, pH 4,5. The Klinion® Personal Care sensitive and intimate is a soap specially developed for sensitive skin and daily intimate hygiene. The low pH of 4.5 provides mild and natural skin care as well as preventing irritation of the skin. The soap prevents the skin from drying out without interfering with its natural moisture and elasticity levels.

ART	REF	Size	Primary pack	Pieces outer carton	Care to care
3015700	30808426	600 ML	Bottle	10	Yes

## Klinion® body bath

Mildly scented liquid wash gel for use during showering or bathing, pH 4,8. The Klinion® Personal Care body bath is made for use during showering or bathing. It can be used as a regular wash gel, but is also very suitable for a bubble bath when adding an appropriate amount to the water. It leaves the skin soft and supple as well as giving the user a sense of wellbeing. The product is mildly scented.

ART	REF	Size	Primary pack	Pieces outer carton	Care to care
3015701	30808427	600 ML	Bottle	10	Yes

## Klinion® shampoo

Mild shampoo for everyday use, pH 4,8. The Klinion® Personal Care shampoo is suitable for everyday use. It leaves the hair looking shiny and voluminous. It also has a conditioning effect, which makes detangling of the hair easier. The shampoo lasts long as it is not diluted with large amount of water, and is suitable for all types of hair.

ART	REF	Size	Primary pack	Pieces outer carton	Care to care
3015702	30808429	600 ML	Bottle	10	Yes





# Skin hydration

Our moisturizing products developed specifically for elderly skin, which less retains moisture, slower produce sebum and has slower ability for regeneration. The products contain nourishing components and vitamin E. The range includes products for normal, dry skin and special care for skin with eczema.

## Klinion® body lotion

Moisturising body lotion with 16% fat content, pH 4,8. The Klinion® Personal Care body lotion moisturises and is easily absorbed by the skin, increasing softness and suppleness. Suitable for use on the body and face after showering, if a non-greasy and quickly absorbed lotion is required.

ART	REF	Size	Primary pack	Pieces outer carton	Care to care
3015676	30808400	30 ML	Tube	36	Yes
3015677	30808401	100 ML	Tube	12	Yes
3015680	30808404	600 ML	Bottle	10	Yes

## Klinion® hand & body cream

Moisturising cream for dry and sensitive skin with 26% fat content, pH 4,5. The Klinion® Personal Care hand & body cream makes the skin feel soft and supple and it protects it from dryness. It is suitable for all types of skin, dry or sensitive skin in particular.

ART	REF	Size	Primary pack	Pieces outer carton	Care to care
3015678	30808402	30 ML	Tube	36	Yes
3015714	30808471	100 ML	Tube	12	Yes
3015682	30808406	200 ML	Tube	6	Yes
3015681	30808405	600 ML	Bottle	10	Yes

## Klinion® body cream 70%

Specialised body cream with 70% fat content for very dry skin and skin with eczema, pH 4,8. The Klinion® Personal care body cream is specially created for dry skin and skin with eczema, where particularly fatty creams are needed. It maintains the elasticity and moisture level of the skin. The high fatty content of 70% prevents roughened and cracked skin. This body cream can be applied anywhere on the body as required, in particular on problematic areas such as hands, feet or face. It prevents the skin from drying out when exposed to cold temperatures.

ART	REF	Size	Primary pack	Pieces outer carton	Care to care
3015679	30808403	30 ML	Tube	36	Yes
3015704	30808433	100 ML	Tube	12	Yes
3015683	30808408	200 ML	Tube	6	Yes

# Skin protection

Prolonged exposure to urine, feces, and aggressive substances can easily damage the skin of incontinence patients. Klinion® protective creams and ointments create an invisible barrier layer on the skin, reducing redness and irritation, and making the skin resistant to aggressive factors. These products can also be used to protect the skin of healthcare specialists, who are constantly exposed to liquids, disinfection and aggressive substances.

## Klinion® zinc ointment

Moisturising, liquid-repellent zinc ointment with 20,5% fat content for skin protection. Available in 12 and 40% Zinc. The Klinion® Personal Care body zinc ointment is for reddened and irritable skin, this mild and liquid-repellent zinc ointment creates a protective layer of film on the skin. The ointment is suitable for protection and treatment of skin in the diaper area. Non-allergenic ingredients make Zinc Ointment particularly well suited for use in infant care.

ART	REF	Size	Primary pack	Pieces outer carton	Care to care
3015690	30808415	15 ML / 12% zinc	Tube	30	Yes
3015689	30808414	100 ML / 12% zinc	Tube	12	Yes
3015691	30808416	60 ML / 40% zinc	Tube	20	Yes

## Klinion® barrier cream

Moisturising, liquid-repellent cream with 20% fat content for protection of dry and sensitive skin. The Klinion® Personal Care barrier liquid-repellent cream can be used on dry and sensitive skin for protection and/or prevention of redness. The lotion is particularly well suited for protection of visible areas of the skin exposed to wetting, such as around the mouth and nose. Environmentally friendly and non-allergenic ingredients make barrier cream very suitable for use in children and infant care.

ART	REF	Size	Primary pack	Pieces outer carton	Care to care
3015688	30808413	15 ML	Tube	30	Yes
3015687	30808412	100 ML	Tube	12	Yes

## Klinion® barrier cream with milk serum

Moisturising, liquid-repellent cream with milk serum for protection of dry and sensitive skin. The Klinion® Personal Care barrier liquid-repellent cream can be used on dry and sensitive skin for protection and/or prevention of redness. The lotion is particularly well suited for protection of visible areas of the skin exposed to wetting, such as around the mouth and nose. Environmentally friendly and non-allergenic ingredients make barrier cream very suitable for use in children and infant care. The properties of milk serum are almost identical to the properties of the skin. The barrier cream based on milk serum supports the protective effect of the skin.

ART	REF	Size	Primary pack	Pieces outer carton
3016607	4100	150 ML	Tube	6

## Klinion® oil

Oil manufactured from natural vegetable oils (including coconut and rapeseed oil) which acts as a softening agent on the skin. Additionally, it greases the skin to increase elasticity and suppleness. The fats create a protective layer on the skin, which reduces evaporation. The Klinion® Personal care oil can be used for gentle removal of zinc ointment residue on the skin surface, treatment of very dry skin, treatment of cradle cap. The oil can also be added to bath water.

ART	REF	Size	Primary pack	Pieces outer carton	Care to care
3051586	30808552	500 ML	Bottle	6	Yes







## KLINION® Nursing & Facility

Klinion® nursing & facility items offer a range of various single-use products that are used daily by healthcare professionals in various care facilities such as hospitals, nursing homes, elderly homes, or general practices.

Klinion® nursing & facility aims to reduce its carbon footprint and make its portfolio more sustainable. Our Klinion® nursing & facility items are easy to use and bring great value.

VAGINAL SPECULUM	Page 72
WOODEN SPATULA	Page 72
COTTON BUDS	Page 73
BED PROTECTION	Page 73
PAPER & PULP PRODUCTS	Page 74
FLUID COLLECTION	Page 75
DRUG ADMINISTRATION DEVICES	Page 75
SHARPS CONTAINER	Page 75



# Vaginal speculum

## Klinion® vaginal speculum

The Klinion® vaginal speculums are intended to be used for single use vaginal examination. Manufactured with body temperature friendly material. Allows the adjustment of the vaginal opening.



ART	REF	Size	Color	Pieces outer carton
3025574	531400	XS (20 MM)	White	200
3025575	531401	S (24 MM)	Blue	200
3025576	531402	M (26 MM)	Red	200
3025577	531403	L (30 MM)	Green	200

# Wooden spatula

## Klinion® wooden spatula

The Klinion® disposable wooden spatulas can be used as: Wax applicator - Tongue Depressors – and many other uses. The spatulas are tasteless, odorless, have a high tensile strength and are biodegradable.



ART	REF	Size	Pieces inner carton	Pieces outer carton	Care to care
3028325	77510301	15 x 2 CM	100	5.000	Yes

# Cotton buds

## Klinion® wooden stem for cotton swab

Wooden stem to use in combination with cotton. 15 cm length.

ART	REF	Size	Material	Pieces inner carton	Pieces outer carton	Care to care
3025578	531510	15 CM	Wood	1.000	20.000	Yes



## Klinion® wooden cotton swab

Single cotton tipped applicator with wooden stem. For various use, such as cleaning and disinfecting small skin surfaces. 15 cm length.

ART	REF	Size	Material	Pieces inner carton	Pieces outer carton	Care to care
3025580	531530	15 CM	Wood with small ball	1.000	20.000	Yes



# Bed protection

## Klinion® pillow cover

Disposable PVC pillow cover. PVC material ensures the pillow to be fully protected against fluids. PVC pillow cover can also be used against dust, allergens and dust mites. Size: 45 x 34 cm.

ART	REF	Size	Color	Pieces inner carton	Pieces outer carton
3025473	520200	45 x 34 CM	White	20	500



## Klinion® mattress cover

Comfortable and hygienic polyethylene mattress cover to protect against cross infection and soiling. Size fits a single bed (210 x 90 x 20 cm).

ART	REF	Size	Color	Pieces inner carton	Pieces outer carton
3025471	520100	One	Blue	10	100



# Paper & pulp products

## Klinion® table paper

2-layered, white paper examination table rolls for the protection of the examination table or other surfaces.

ART	REF	Size	Type	Perforated	Pieces outer carton	Care to care
3025889	555050	50 CM x 150 M	Embossed	Yes	6	Yes
3070425	438080	50 CM x 46 M	Micro embosed	Yes	9	Yes
3070426	438096	50 CM x 46 M	Micro embosed	Yes	9	Yes
3070427	438070	52 CM x 5 0M	Smooth	Yes	12	Yes
3070428	438074	52 CM x 50 M	Smooth	No	12	Yes
3070429	438079	50 CM x 46 M	Micro embossed, recycled paper	Yes	9	Yes
3070440	438095	50 CM x 50 M	1-ply + PE coating	Yes	6	No

## Klinion® tissues

Klinion® tissues to be used for, among other things, blowing the nose, cleaning or blotting the face. Very soft for the skin.

ART	REF	Size	Pieces inner carton	Pieces outer carton
3025583	531550	x	100	4.000

## Klinion® pulp products

The Klinion® disposable pulp products are intended to be used as universal receptacles for receiving soiled dressings and light wastes, such as bodily exudates. Maceratable with any brand of macerator.

ART	REF	Product	Size	Pieces inner carton	Pieces outer carton	Care to care
3067000	690101	Kidney bowl	700 ML	50	300	Yes
3067641	690102	Bed pan liner	2.000 ML	n/a	110	Yes
3067642	690103	Urine bottle	900 ML	n/a	100	Yes

## Klinion® laminated bibs and drapes

Klinion® laminated bibs and drapes helps to keep patients and surfaces clean. The PE coating helps to prevent moist leaking through the material.

ART	REF	Product	Size	Pieces inner carton	Pieces outer carton
3060723	77510101	Bib with ties	38 x 70 CM	100	600
3070441	7115008	Drapes	39 x 40 CM	100	1200

# Fluid collection

## Klinion® drinking cup & lid

Klinion® drinking cups and corresponding lids are used to provide a clean and easy solution for orally taking in fluids. Not recommended for use above 40°C. In full compliance with Commission Regulation EU 10/2011 on plastic materials in contact with food.

ART	REF	Size	Pieces inner carton	Pieces outer carton
3053246	77510938	185 ML	50	1.000
3053247	77510939	corresponding lid	50	1.000

## Klinion® sputum cup

Klinion® sputum cups are used to facilitate disposal of mucus excretion of people. Easy closure function, due to attached lid.

ART	REF	Size	Pieces inner carton	Pieces outer carton
3059036	950010	8 x 6,50 CM	20	300

# Drug administration devices

## Klinion® medicine cups and lid

Eco Medicine Cups are disposable cups specifically designed for administering precise doses of medicine to patients, compatible with KPC lid.

ART	REF	Size	Color	Pieces inner carton	Pieces outer carton	Care to care
3068484	77510941	30 ML	Transparent	800	6400	Yes
3068485	77510942	30 ML	Red	800	6400	Yes
3068486	77510943	30 ML	Blue	800	6400	Yes
3068487	77510944	30 ML	Yellow	800	6400	Yes
3068488	77510945	30 ML	Green	800	6400	Yes
3068489	77510946	40 MM x 4 MM	White	100	4000	Yes

# Sharps container

## Klinion® sharps container

The Klinion® sharps containers are designed for hospitals and healthcare institutions to dispose of syringes, scalpels and other types of sharps. Design and manufacturing secure a high degree of safety.

ART	REF	Size	Pieces outer carton	Care to care
3028327	77510900	0.20 L	100	Yes
3028328	77510905	0.50 L	100	Yes
3028329	77510910	1.50 L	100	Yes
3028330	77510915	2 L	100	Yes
3028332	77510921	5 L	30	Yes
3028334	77510926	7 L	25	Yes
3028336	77510931	11 L	20	Yes
3028338	77510936	21 L	10	Yes







# KLINION® Infusion & Vascular Access

Klinion®'s Infusion and vascular access portfolio offers a wide range of high-quality needles and syringes designed for safe, efficient, and reliable blood collection and injection.

We prioritize patient safety and ease of use, providing healthcare professionals with trusted solutions for flushing, hydration, and medication dilution. Our commitment to quality and innovation ensures reliable performance while supporting clinical efficiency.

As we expand the Infusion & vascular access range, Klinion continues to develop safe, convenient, and high-standard solutions for healthcare professionals and their patients

## Syringes

### Klinion® pre-filled saline flush syringe

Klinion®'s saline flush (0,9% Sodium Chloride Injection) syringes support optimal maintenance of vascular access devices, aligning with your clinical protocols while providing peace of mind through quality and reliability. Available in 3 mL, 5 mL and 10 mL saline volumes within 10 mL syringes.

ART	REF	Product	Size	Pieces inner carton	Pieces outer carton
3070431	C0880364	Klinion® pre-filled saline flush syringe SP	3 ML	30	180
3070432	C0880365	Klinion® pre-filled saline flush syringe SP	5 ML	30	180
3070433	C0880366	Klinion® pre-filled saline flush syringe SP	10 ML	30	180
3070434	C0880367	Klinion® pre-filled saline flush syringe XS	3 ML	30	180
3070435	C0880368	Klinion® pre-filled saline flush syringe XS	5 ML	30	180
3070436	C0880369	Klinion® pre-filled saline flush syringe XS	10 ML	30	180





## ABSORIN® Incontinence Absorbing

Absorin® offers a broad assortment of incontinence materials with a suitable solution for everyone. Each type of incontinence is different, and so are bodies. The choice for the right Absorin® product is made by looking at the level of self-reliance and the level of incontinence. A light product if that's possible, and a heavier product if that's necessary.

All products contain superabsorbent powder (SAP), which completely encloses the urine and neutralizes odours and are available in light to heavy absorption levels. Absorin has products for men and women in every shape and form and even offers a solution in size XXL. The 'Cotton feel' coating on the products feels as soft as cotton and has a breathable effect.

Both the packaging and the products themselves provide the necessary information about the use, absorption level, and size of each product type. Colour coding indicates the absorption capacity and icons provide advice on day and/or night use.

With Absorin® you can rely on the right incontinence material and absorption capacity for every moment.

FINETTE	Page 80
LEVEL II	Page 80
MINCY	Page 80
SANETTE	Page 80
FIX FIXATION PANTS	Page 81
PANTS	Page 81
SLIP	Page 82
T-FIT	Page 82
UNDERPADS	Page 83
WASHABLE UNDERPAD	Page 83
CLASSIC RECTANGULAR PADS	Page 83
MATERNITY PAD	Page 83



## Absorin® finette

For very light to moderate urine loss.

Absorin® finette is a pad for men and women. The long wide adhesive strip at the bottom ensures the pad to remain in place under various circumstances. Absorin® finette has a discreet white colour and can be worn virtually invisibly in combination with close fitting elastic underwear.



ART	REF	Product	Absorption capacity	Pieces inner carton	Pieces outer carton	Care to care
3014426	10516200	Finette ultra mini	100 ML	28	336	Yes
3069420	10516206	Finette mini	170 ML	20	240	Yes
3069365	10516211	Finette mini plus	230 ML	14	168	Yes
3014429	10516215	Finette normal	260 ML	14	168	Yes
3014430	10516225	Finette extra	530 ML	14	168	Yes
3014431	10516235	Finette super	740 ML	14	168	Yes
3036417	10516245	Finette maxi	900 ML	12	288	Yes
3036418	10516255	Finette maxi night	1.100 ML	10	40	Yes

## Absorin® level 2 for men

For light to moderate urine leakage.

Absorin® level 2 is a bowl-shaped pad specially designed for men. The long wide adhesive strip at the bottom ensures the pad to remain in place under various circumstances. Absorin® level 2 has a discreet, white colour and can be worn virtually invisibly in combination with close-fitting elastic men's underwear.



ART	REF	Product	Absorption capacity	Pieces inner carton	Pieces outer carton	Care to care
3068771	10516601	Level 2	430 ML	10	160	Yes

## Absorin® mincy for men

For light to moderate urine leakage.

Absorin® mincy is specially designed for men, it has a shape which fits the anatomical forms of the man perfect. It has a discreet, white colour and can be worn in combination with close-fitting elastic men's underwear.



ART	REF	Product	Absorption capacity	Pieces inner carton	Pieces outer carton	Care to care
3026352	6400	Mincy light	560 ML	28	224	Yes
3026383	6500	Mincy normal	700 ML	28	224	Yes

## Absorin® sanette

For moderate to heavy urine and stool leakage.

Absorin® sanette is an absorbent pad which is suitable for both men and women. It can be worn day and night and fits the body perfect in various circumstances. The absorbent pad may be worn in combination with close fitting underwear or Absorin® fixation pants.



ART	REF	Product	Absorption capacity	Pieces inner carton	Pieces outer carton	Care to care
3035714	10517308	Sanette day light	1.250 ML	20	80	Yes
3035738	10517310	Sanette day	1.500 ML	20	80	Yes
3035739	10517320	Sanette day extra	1.800 ML	20	80	Yes
3036311	10517330	Sanette night	2.200 ML	20	80	Yes
3036313	10517340	Sanette heavy	2.800 ML	20	80	Yes
3036314	10517350	Sanette ultra	3.500 ML	20	80	Yes

## Absorin® fix fixation pants

For moderate to heavy urine and stool leakage. These products are washable and reusable.

- Absorin® fix normal stretch are elastic fixation pants for fixation of incontinence pads without an adhesive strip.
- Absorin® fix extra stretch is are elastic extra sturdy fixation pants with short legs for fixation of incontinence pads without an adhesive strip.
- Absorin® fix micro comfort are sturdy elastic, cotton fixation pants with longer legs for fixation of incontinence pads.

ART	REF	Product	Size	Pieces inner carton	Pieces outer carton	Care to care
3065263	4020	Fix normal S	45 - 90 CM	5	100	Yes
3065264	4030	Fix normal M	80 - 105 CM	5	100	Yes
3065265	4040	Fix normal L	90 - 125 CM	5	100	Yes
3065266	4042	Fix normal XL	110 - 145 CM	5	100	Yes
3065267	4050	Fix normal XXL	120 - 160 CM	5	100	Yes

ART	REF	Product	Size	Pieces inner carton	Pieces outer carton	Care to care
3065280	4015	Fix extra S	45 - 90 CM	5	100	Yes
3065281	4025	Fix extra M	80 - 125 CM	5	100	Yes
3065283	4035	Fix extra L	80 - 145 CM	5	100	Yes
3065284	4045	Fix extra XL	100 - 180 CM	5	100	Yes
3065285	4055	Fix extra XXL	150 - 190 CM	5	100	Yes

ART	REF	Product	Size	Pieces inner carton	Pieces outer carton	Care to care
3065268	4082	Fix micro S/M	80 - 105 CM	1	30	Yes
3065269	4084	Fix micro L/XL	90 - 145 CM	1	30	Yes

## Absorin® pants

For light to very heavy urine leakage.

Absorin® pants are an absorbent pad and pants in one, for both men and women. They can be worn as normal underwear and are suitable for active, self-reliant people who need extra protection. The pants are easy to put on, even for the large to obese user.

ART	REF	Product	Absorption capacity	Pieces inner carton	Pieces outer carton	Care to care
3070868	10511231	Pants slimfit M	720 ML	10	80	Yes
3070869	10511241	Pants slimfit L	710 ML	10	80	Yes
3014412	10511205	Pants plus XS	1.300 ML	20	100	Yes
3014806	1225-A	Pants plus M	1.338 ML	14	112	Yes
3014816	1235-A	Pants plus L	1.366 ML	14	112	Yes
3014822	1245-A	Pants plus XL	1.300 ML	14	56	Yes
3059021	10511255	Pants plus XXL	1.400 ML	12	48	Yes
3014416	10511315	Pants fit S	1.577 ML	14	112	Yes
3014417	10511325	Pants fit M	1.966 ML	14	112	Yes
3014418	10511335	Pants fit L	1.982 ML	14	112	Yes
3014419	10511345	Pants fit XL	1.926 ML	14	112	Yes
3068770	10531274	Pants super S	2.400 ML	18	72	Yes
3014413	10511275	Pants super M	2.400 ML	18	72	Yes
3014414	10511285	Pants super L	2.400 ML	16	64	Yes
3014415	10511295	Pants super XL	2.400 ML	12	48	Yes
3059022	10511305	Pants super XXL	2.400 ML	11	44	Yes
3070388	10511301	Pants Super XXXL (Bariatric)	3.000 ML	9	36	Yes



## Absorin® slip

For moderate to very heavy urine and/or stool leakage.

Absorin® slip is a one-piece, absorbent pad which is suitable for both men and women and is held in place by four fixing strips. It can be worn day and night and fits the body perfectly in various circumstances.

ART	REF	Product	Absorption capacity	Pieces inner carton	Pieces outer carton	Care to care
3013999	0808-A	Slip day XS	1.550 ML	14	168	Yes
3013961	0720-A	Slip day M	2.000 ML	28	84	Yes
3013963	0730-A	Slip day L	2.600 ML	28	112	Yes
3014065	0840-A	Slip day XL	2.350 ML	20	80	Yes
3014009	0815-A	Slip night S	1.800 ML	14	112	Yes
3014037	0822-A	Slip night M	2.750 ML	28	84	Yes
3014055	0832-A	Slip night L	2.950 ML	28	84	Yes
3014067	0842-A	Slip night XL	3.200 ML	14	56	Yes
3014087	0910-A	Slip heavy S	2.300 ML	20	80	Yes
3014093	0920-A	Slip heavy M	3.600 ML	20	60	Yes
3014097	0930-A	Slip heavy L	4.100 ML	20	60	Yes
3014099	0940-A	Slip heavy XL	3.800 ML	14	56	Yes
3014373	1022-A	Slip ultra M	3.448 ML	15	45	Yes
3014379	1032-A	Slip ultra L	4.126 ML	15	45	Yes
3060337	1042-A	Slip ultra XL	4.500 ML	14	56	Yes
3070387	10511300	Slips Ultra XXL (Bariatric)	4.000 ML	8	32	Yes



## Absorin® T-fit

For moderate to very heavy urine and/or stool leakage.

Absorin® T-fit is one-piece absorbent pad with a hip band which is suitable for both men and women. The hip band can be adjusted to the size of the user and can be attached to the pad with handy fixation strips. Due to this adjustable hip band, it is especially suitable for users who are cared for with the help of a standing patient lift.

ART	REF	Product	Absorption capacity	Pieces inner carton	Pieces outer carton	Care to care
3036689	10519125	T-fit day M	1.750 ML	15	60	Yes
3036704	10519135	T-fit day L	1.850 ML	15	60	Yes
3014442	10519825	T-fit day XL	2.400 ML	15	60	Yes
3014443	10519025	T-fit night S	2.000 ML	15	60	Yes
3036697	10519325	T-fit night M	2.400 ML	15	60	Yes
3036706	10519335	T-fit night L	2.500 ML	15	60	Yes
3014446	10519835	T-fit night XL	3.000 ML	15	60	Yes
3014447	10519035	T-fit heavy S	2.400 ML	15	60	Yes
3036698	10519725	T-fit heavy M	3.600 ML	15	60	Yes
3036707	10519735	T-fit heavy L	4.000 ML	15	60	Yes
3014449	10519845	T-fit heavy XL	4.000 ML	15	60	Yes
3036730	10519925	T-fit ultra M	3.900 ML	15	60	Yes
3036731	10519935	T-fit ultra L	4.400 ML	15	60	Yes



## Absorin® underpads

Absorin® underpads are disposable underpads for usage in a bed or wheelchair to serve as extra protection. The products have a light to moderate absorbency. It contains SAP (Super Absorbent Powder) which helps the products to absorb and have anti-odour properties.

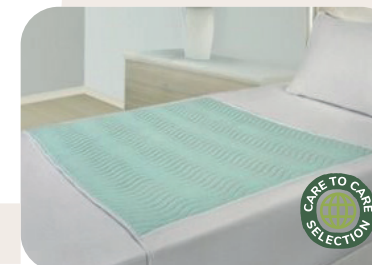
ART	REF	Product	Absorption capacity	Pieces inner carton	Pieces outer carton	Care to care
3069463	10534060	Underpad normal 40 x 60 CM	600 ML	30	270	Yes
3069463	10534062	Underpad extra 40 x 60 CM	800 ML	30	270	Yes
3069465	10536060	Underpad normal 60 x 60 CM	900 ML	30	120	Yes
3069466	10536062	Underpad extra 60 x 60 CM	1.250 ML	30	120	Yes
3069467	10536090	Underpad normal 60 x 90 CM	1.400 ML	30	120	Yes
3069468	10536092	Underpad extra 60 x 90 CM	2.000 ML	30	120	Yes
3069469	4136	Twinco disposable underpad with tuck-in flaps 180 x 90 CM	1.650 ML	20	80	Yes



## Absorin® washable underpad

The Absorin® washable underpad with tuck-in flaps can be used as extra protection in a bed. It has optimal comfort due to a soft topside. It can be washed at 90 degrees and is washable up to 300 times.

ART	REF	Product	Absorption capacity	Pieces inner carton	Pieces outer carton	Care to care
3015049	1580	Washable underpad 85 x 90 CM	2.445 ML	1	15	Yes



## Absorin® classic rectangular pads

For light to moderate incontinence.

Absorin® classic is a rectangular absorbent pad which is suitable for both men and women. The absorbent pad may be worn in combination with close fitting underwear or Absorin® fixation pants.

ART	REF	Product	Absorption capacity	Pieces inner carton	Pieces outer carton	Care to care
3026984	7045	Classic inlay mini	400 ML	50	200	Yes
3026987	7050	Classic inlay maxi	890 ML	28	112	Yes



## Absorin® maternity pad

Absorin® maternity pads provide optimal protection after childbirth. The maternity pads feels soft, are gentle on the skin, and absorb both blood and urine.

ART	REF	Product	Pieces inner carton	Pieces outer carton
3064001	7014	Absorin Maternity pad (with adhesive strip)	28	224







curion®

## CURION® Contenance Drainage

Curion® offers a wide range of solutions for fecal and urinary incontinence products such as urine leg and bed bags, bladder irrigation solutions and anal tampons.

The Curion® Curibag® assortment includes both sterile or non-sterile leg and bed bags suitable for single or multiple-day usage, available in different pack sizes.

The urine bag range is accompanied by a wide variety of accessories enabling the user to use the products in line with their needs. For optimal and comfortable usage Curion® offers multiple combinations of fixation materials which can be selected for the specific urine bag of choice.

Curion® provides high quality products against delivering security and convenience and improves quality of life against an affordable price.

CURION CURIBAG \_\_\_\_\_ Page 86

BLUELINE \_\_\_\_\_ Page 88

CURION C4 \_\_\_\_\_ Page 89

CURION CURIBAG SOFT \_\_\_\_\_ Page 89

ACCESSORIES \_\_\_\_\_ Page 90

FIXETTE \_\_\_\_\_ Page 90

CURIFLUSH IRRIGATION FLUID \_\_\_\_\_ Page 90

ANAL TAMPONS \_\_\_\_\_ Page 91

The Curion® CuriBag disposable urine bag range are visually green or transparent with indicative graduation marks.

All ME-coded non-sterile urine bags are provided single packed.

Curion® CuriBag leg bag, non-sterile

ART	REF	Product	Volume	Tube	Valve	Pieces inner carton	Pieces outer carton
3070034	ME-01001	Urine leg bag (Multi-chamber)	500 ML	Variable (max. 50 CM)	Cross valve	25	100
3070035	ME-01002	Urine leg bag (Multi-chamber)	500 ML	Variable (max. 50 CM)	Lever tap	25	100
3070036	ME-01003	Urine leg bag (Multi-chamber)	750 ML	Variable (max. 50 CM)	Cross valve	25	100
3070037	ME-01004	Urine leg bag (Multi-chamber)	750 ML	Variable (max. 50 CM)	Lever tap	25	100
3070038	ME-01005	Urine leg bag	600 ML	Variable (max. 50 CM)	Lever tap	25	100
3070039	ME-01006	Urine leg bag	600 ML	Variable (max. 50 CM)	Cross valve	25	100
3070064	ME-01007	Urine leg bag	750 ML	Variable (max. 50 CM)	Cross valve	25	100
3070066	ME-01008	Urine leg bag	800 ML	Variable (max. 50 CM)	Lever tap	25	100
3070067	ME-01009	Urine leg bag	800 ML	Variable (max. 50 CM)	Cross valve	25	100
3070068	ME-01010	Urine leg bag	600 ML	Variable (max. 30 CM)	Lever tap	25	100
3070069	ME-01011	Urine leg bag	600 ML	Variable (max. 10 CM)	Lever tap	25	100
3070070	ME-01012	Urine leg bag	600 ML	Variable (max. 30 CM)	Cross valve	25	100
3070071	ME-01013	Urine leg bag	600 ML	Variable (max. 10 CM)	Cross valve	25	100
3070072	ME-01014	Urine leg bag	750 ML	Variable (max. 10 CM)	Cross valve	25	100
3070073	ME-02001	Urine leg bag	1500 ML	Variable (max. 90 CM)	Cross valve	25	100

Curion® CuriBag leg bag, sterile

ART	REF	Product	Volume	Tube	Valve	Pieces inner carton	Pieces outer carton
3070046	ME-01015	Urine leg bag (Multi-chamber)	350 ML	10 CM	Lever tap	25	100
3070047	ME-01016	Urine leg bag (Multi-chamber)	350 ML	30 CM	Lever tap	25	100
3070048	ME-01017	Urine leg bag (Multi-chamber)	500 ML	10 CM	Lever tap	25	100
3070049	ME-01018	Urine leg bag (Multi-chamber)	500 ML	30 CM	Lever tap	25	100
3070065	ME-01019	Urine leg bag (Multi-chamber)	750 ML	10 CM	Lever tap	25	100
3070086	ME-01020	Urine leg bag (Multi-chamber)	750 ML	30 CM	Lever tap	25	100
3070087	ME-01021	Urine leg bag (Multi-chamber)	500 ML	50 CM	Lever tap	25	100

Curion® CuriBag bed bag, non-sterile

ART	REF	Product	Volume	Tube	Valve	Pieces inner carton	Pieces outer carton
3070074	ME-02002	Urine bed bag	1500 ML	110 CM	-	25	100
3070075	ME-02003	Urine bed bag	1500 ML	10 CM	-	25	100
3070076	ME-02005	Urine bed bag	2000 ML	90 CM	-	25	100
3070077	ME-02006	Urine bed bag	2000 ML	100 CM	-	25	100
3070078	ME-02004	Urine bed bag	1500 ML	90 CM	Cross valve	25	100
3070079	ME-02007	Urine bed bag	2000 ML	90 CM	Cross valve	25	100
3070080	ME-02008	Urine bed bag	2000 ML	120 CM	Cross valve	25	100
3070081	ME-02009	Urine bed bag	2000 ML	130 CM	Cross valve	25	100
3070082	ME-02010	Urine bed bag	2000 ML	110 CM	Cross valve	25	100
3070083	ME-02011	Urine bed bag	2000 ML	110 CM (wide)	Cross valve	25	100

Curion® CuriBag bed bag, sterile

ART	REF	Product	Volume	Tube	Valve	Pieces inner carton	Pieces outer carton
3070091	ME-02012	Urine bed bag	2000 ML	120 CM	Cross valve	25	100







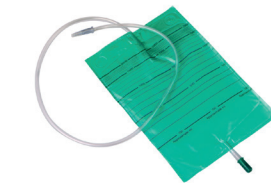
### Curion® CuriBag urine bag green, max 24 hours usage

ART	REF	Product	Volume	Tube	Valve	Pieces inner carton	Pieces outer carton
3015203	2021	Urine leg bag	500 ML	10 CM	Cross valve	40	160
3015210	2025	Urine leg bag	500 ML	45 CM	Cross valve	25	100
3015212	2027	Urine leg bag	500 ML	60 CM	Cross valve	25	100



### Curion® CuriBag urine bag transparent, max 24 hours usage

ART	REF	Product	Volume	Tube	Valve	Pieces inner carton	Pieces outer carton
3015248	2061	Urine leg bag	750 ML	10 CM	Cross valve	25	200
3015250	2065	Urine leg bag	750 ML	45 CM	Cross valve	25	200
3059200	8030	Urine leg bag	500 ML	10 CM	Pull valve	25	400
3059202	8034	Urine leg bag	500 ML	45 CM	Pull valve	25	250
3059203	8036	Urine leg bag	500 ML	60 CM	Pull valve	25	250



### Curion® CuriBag urine bag green, max 24 hours usage

ART	REF	Product	Volume	Tube	Valve	Pieces inner carton	Pieces outer carton
3028500	8011	Urine bed bag	1.500 ML	90 CM	No valve	25	100
3028502	8015	Urine bed bag	1.500 ML	10 CM	No valve	25	100
3028507	8019	Urine bed bag	1.500 ML	90 CM	Pull valve	25	100
3015199	2019	Urine bed bag	2.000 ML	90 CM	Cross valve	25	100



### Curion® CuriBag urine bag transparent, max 24 hours usage

ART	REF	Product	Volume	Tube	Valve	Pieces inner carton	Pieces outer carton
3029146	8758	Urine bed bag	2.000 ML	110 CM	Cross valve	25	200
3034976	8078	Urine bed bag	2.000 ML	90 CM	Pull valve	25	200
3028543	8070	Urine bed bag	1.500 ML	90 CM	No valve	25	250
3028573	8074	Urine bed bag	1.500 ML	10 CM	No valve	25	400
3028558	8072	Urine bed bag	1.500 ML	110 CM	No valve	25	250



### Blueline urine bed bag transparent with blue indicative measuring indication

ART	REF	Product	Volume	Tube	Valve	Pieces inner carton	Pieces outer carton
3026192	602000	Urine bed bag	2.000 ML	130 CM	Cross valve	40	160

### Curion® C4 urine bag transparant

The Curion® C4 bed bag with reference number 2020 is a sterile bed bag and has a needle free sampling port. It is suitable for multiple day usage.

The Curion® C4 bed bag with reference number 2022 has a needle free sampling port and is suitable for max 24 hours usage.

The needle free sampling port eliminates the risk of needle stick injury during urine sampling. The cross valve is easy to operate with one hand.

ART	REF	Product	Volume	Tube	Valve	Pieces inner carton	Pieces outer carton
3015201	2020	Urine bed bag sterile packed per piece	2.000 ML	120 CM	Cross valve	10	50
3015207	2022	Urine bed bag	2.000 ML	120 CM	Cross valve	1	80



### Curion® CuriBag soft urine bag, multiple day usage

The Curion® CuriBag soft range consists of leg and bed bags with a nonwoven backing for maximum comfort. The three chamber system of the bags ensures the urine is divided in three chambers.

All bags have a lever tap with an arrow which easily indicates when the tap is open. The range is available in small and bulk packaging and suitable for multiple day usage.

ART	REF	Product	Volume	Tube	Valve	Pieces inner carton	Pieces outer carton
3015238	2054k	Urine leg bag	500 ML	Variable (max. 15 CM)	Lvertap	10	80
3015237	2054	Urine leg bag	500 ML	Variable (max. 15 CM)	Lvertap	30	90
3015240	2055k	Urine leg bag	500 ML	Variable (max. 60 CM)	Lvertap	10	80
3015239	2055	Urine leg bag	500 ML	Variable (max. 60 CM)	Lvertap	30	90
3015242	2056k	Urine leg bag	750 ML	Variable (max. 60 CM)	Lvertap	10	80
3015241	2056	Urine leg bag	750 ML	60 CM	Lvertap	30	90
3015257	2072	Urine leg bag	500 ML	6 CM	Lvertap	30	90
3015258	2075	Urine leg bag	500 ML	6 CM	Lvertap	30	90

ART	REF	Product	Volume	Tube	Valve	Pieces inner carton	Pieces outer carton
3015244	2057k	Bedbag/Legbag	1.500 ML	Variable (max. 120 CM)	Cross valve	10	80
3015243	2057	Bedbag/Legbag	1.500 ML	Variable (max. 120 CM)	Cross valve	30	90
3015247	2060	Bedbag/Legbag	2.000 ML	Variable (max. 140 CM)	Lvertap	30	90



Curion® accessories

- The Curion® soft leg straps can be used in combination with the Curion® CuriBag soft and Curion® careline leg bags.
- The Curion® leg bag holder cotton can be fixated around the waist and is suitable for a waist of 105 cm. The product is washable.
- The Curion® extension tube can be used to lengthen the urine bed bag and can be cut to the desired length.

ART	REF	Product	Pieces inner carton	Pieces outer carton
3070092	ME-03001	Curion® Sterile Cross/T-valve	25	300
3070100	ME-03002	Curion® Sterile lever tap	25	300
3070101	ME-03003	Curion® Sterile lever tap in white	25	300
3070084	ME-03004	Curion® Leg bag straps with buttons	-	100
3070085	ME-03005	Curion® Leg bag straps without buttons	-	100
3070090	ME-03006	Curion® Bed bag hanger	-	100
3028542	8048	Curion® soft white leg strap with Velcro and buttons	40	160
3028539	8044	Curion® soft white leg straps with Velcro	25	250
2000205	8080	Curion® urine leg bag holder 100% cotton	Packed per piece	160
3028538	8042	Curion® soft extension tube, max. 60 CM	10	80



Curion® fixette urine leg bag holder

The Curion® fixette leg bag holder can be put around the leg similar to putting on a stocking. The leg size determines the needed size. The products are washable.



ART	REF	Product	Size	Pieces inner carton	Pieces outer carton
3028617	8084	Leg bag holder lower leg S	30 - 55 CM	1	175
3028618	8086	Leg bag holder lower and upper leg M	45 - 75 CM	1	150
3028619	8088	Leg bag holder upper leg L	55 - 85 CM	1	125
3028620	8090	Leg bag holder upper leg XL	65 - 95 CM	1	125

Curion® CuriFlush irrigation fluid

Curion® CuriFlush irrigation fluids are ready to use, complete flushing systems for hygienic and easy bladder flushing.

Solutio R

Irrigation solutions for urinary catheter maintenance and bladder irrigation.

- Easy to remove connector which facilitates a hygienic way of working
- User friendly due to soft bag material
- Suitable to operate with one hand

ART	REF	Product	Pieces inner carton	Pieces outer carton
3029280	8865	CuriFlush irrigation Solutio R 50 ML with injection port	10	30
3029276	8860	CuriFlush irrigation Solutio R 100 ML with injection port	10	30



Solutio G

Irrigation solutions for urinary catheter maintenance and bladder irrigation. Dissolves the crystals and prevents the catheter encrustation.

- Easy to remove connector for hygienic use
- User friendly due to soft bag material
- Suitable to operate with one hand

ART	REF	Product	Pieces inner carton	Pieces outer carton
3029282	8875	CuriFlush irrigation Solutio G 50 ML with injection port	10	30
3029281	8870	CuriFlush irrigation Solutio G 100 ML with injection port	10	30



Nacl 0,9%

For rinsing the catheter, bladder irrigation and vehicle for medicines for bladder instillation. Not effective against encrustation.

- Easy to remove connector which facilitates a hygienic way of working
- User friendly due to soft bag material
- Suitable to operate with one hand
- Including injection port for adding medication

ART	REF	Product	Pieces inner carton	Pieces outer carton
3029326	8885	CuriFlush irrigation Nacl 0,9% 50 ML with injection port	10	30
3029289	8880	CuriFlush irrigation Nacl 0,9% 100 ML with injection port	10	30



Curion® anal tampons

The Curion® anal tampons are designed for users with unintended loss of stool. The anal tampons temporarily keep the stool from exiting the body. The products are packed per piece and each inner carton has a clear Instruction For Use included.

ART	REF	Product	Size	Pieces inner cart.	Pieces outer cart.
3046805	1016	Concave analtampon 16 MM	16 / 67 MM	50	600
3046869	1018	Concave analtampon 18 MM	18 / 67 MM	50	600
3046870	1020	Concave anal tampon 20 MM	20 / 67 MM	50	600
3046871	1025	Concave anal tampon 25 MM	25 / 67 MM	40	480
3046872	1218	Concave anal tampon 18 MM shortened	18 / 60 MM	50	600
3046875	1520	Anal tampon bullet shaped 20 MM	20 / 60 MM	50	600
3046876	1524	Anal tampon bullet shaped 24 MM	24 / 60 MM	50	600
3046877	1528	Anal tampon bullet shaped 28 MM	28 / 67 MM	40	480
3046881	3020	Convex anal tampon 20 MM	24 / 51 MM	50	600
3046882	3030	Convex anal tampon 30 MM	33 / 60 MM	50	600
3014840	1400	Anal tampon applicator standard	22mm / 105 MM	1	20
3014841	1410	Anal tampon applicator large	22 mm / 180 MM	1	20







## CENAMAN® Medical Nutrition

Cenaman® provides patients of all ages in and outside their homes with adequate nutrition so they can live a healthier life. We support them with an extensive range of flavours as well as medical devices for administering medical nutrition. The Cenaman® product range includes tube-, sip feed, and accessories.

The quality of our Cenaman® products is well monitored by continuous research which leads to an optimal variety of recipes and other solutions, such as ease of use.

All these qualities combined ensure Cenaman® is the best suitable option for users and health care workers.

TUBE FEEDING \_\_\_\_\_ Page 94

SIP FEEDING \_\_\_\_\_ Page 96

ENTERAL PUMP \_\_\_\_\_ Page 96

ACCESSORIES \_\_\_\_\_ Page 97

# Tube feeding

## Cenaman® standard

Cenaman® standard, nutritionally complete tube feed (1 Kcal / ML) without fibre. Lactose free and gluten-free. For the dietary management of disease related malnutrition.



Nutritional composition per 100 ML:

Energy : 100 Kcal (421 kJ)

Fat: 3,3 GR

Carbohydrates: 14 GR

Protein: 3,8 GR

ART	REF	Size	Primary pack	Pieces inner carton	Pieces outer carton
3068114	206520340	500 ML	1 Bottle	-	12 (x500 ML)

## Cenaman® standard G

Cenaman® standard G, nutritionally complete tube feed (1 Kcal / ML) with fibre (2,1 GR / 100 ML). Lactose free and gluten-free. For the dietary management of disease related malnutrition in patients with impaired glucose metabolism.



Nutritional composition per 100 ML:

Energy : 103 Kcal (432 kJ)

Fat: 3,5 GR

Carbohydrates: 12 GR

Protein: 4,1 GR

ART	REF	Size	Primary pack	Pieces inner carton	Pieces outer carton
3068118	206520344	500 ML	1 Bottle	-	12 (x500 ML)

## Cenaman® fibre

Cenaman® fibre, nutritionally complete tube feed (1 Kcal / ML) with fibre (1,5 GR / 100 ML). Lactose free and gluten-free. For the dietary management of disease-related malnutrition.



Nutritional composition per 100 ML:

Energy : 104 Kcal (437 kJ)

Fat: 3,3 GR

Carbohydrates: 14 GR

Protein: 3,8 GR

ART	REF	Size	Primary pack	Pieces inner carton	Pieces outer carton
3068115	206520341	500 ML	1 Bottle	-	12 (x500 ML)

## Cenaman® soy fibre

Cenaman® soy fibre, nutritionally complete soy based tube feed (1 Kcal / ML) with fibre (1,5 GR / 100 ML). Contains fish oil. Lactose free and gluten-free. For the dietary management of disease related malnutrition in patients who are intolerant to cow's milk protein.



Nutritional composition per 100 ML:

Energy : 103 Kcal (431 kJ)

Fat: 3,5 GR

Carbohydrates: 13 GR

Protein: 3,9 GR

ART	REF	Size	Primary pack	Pieces inner carton	Pieces outer carton
3068119	206520345	500 ML	1 Bottle	-	12 (x500 ML)

## Cenaman® energy fibre

Complete, energy-rich tube feeding (1,5 Kcal / ML) based on milk and soy protein with fibre (2 GR / 100 ML). Lactose free and gluten-free. For the dietary management of disease related malnutrition in patients with increased energy needs.



Nutritional composition per 100 ML:

Energy : 152 Kcal (640 kJ)

Fat: 5 GR

Carbohydrates: 20 GR

Protein: 6 GR

ART	REF	Size	Primary pack	Pieces inner carton	Pieces outer carton
3068116	206520342	500 ML	1 Bottle	-	12 (x500 ML)

## Cenaman® energy

Complete, high caloric tube feeding (1,5 Kcal / ML) based on milk and soy protein without fibre. Low in lactose and gluten-free. For the dietary management of disease related malnutrition in patients with increased energy needs.



Nutritional composition per 100 ML:

Energy : 150 Kcal (632 kJ)

Fat: 5 GR

Carbohydrates: 20 GR

Protein: 6 GR

ART	REF	Size	Primary pack	Pieces inner carton	Pieces outer carton
3068117	206520343	500 ML	1 Bottle	-	12 (x500 ML)

## Cenaman® peptid

Nutritionally complete peptide based tube feed (1 Kcal / ML). Gluten-free and low in lactose. For the dietary management of disease related malnutrition in patients with malabsorption and/or maldigestion.



Nutritional composition per 100 ML:

Energy : 100 Kcal (424 kJ)

Fat: 1,3 GR

Carbohydrates: 18 GR

Protein: 3,8 GR

ART	REF	Size	Primary pack	Pieces inner carton	Pieces outer carton
3068140	206520346	500 ML	1 Bottle	-	12 (x500 ML)

## Cenaman® 2 KCAL HP Fibre

Cenaman 2 KCAL HP Fibre is dietetic food for special medical purposes intended for drinking or tube feeding. Nutritionally complete hypercaloric (2 kcal/ml) nutrition with high content of protein (24 % of total energy value) and fibre, rich in vitamin D. Gluten and Lactose free.

Nutritional composition per 100 ML:

Energy: 200 Kcal (840 kJ)

Fat: 7,8 GR

Carbohydrates: 19,5 G

Protein: 12 GR

ART	REF	Size	Primary pack	Pieces inner carton	Pieces outer carton
3070393	206520347	500 ML	1 Bottle	-	12 (x500 ML)



# Sip feeding

## Cenaman® drink energy 1,5 Kcal

Cenaman® drink energy 1,5 is a food for special medical purposes. It is a nutritionally complete high caloric (1,5 Kcal / ML) oral nutritional supplement. Fibre free, gluten free and low in lactose. For the dietary management of (risk of) disease-related malnutrition. Available in 6 different flavours.

Nutritional composition per bottle of 200 ML:

Energy : 300 Kcal (1260 kJ)

Fat: 11,6 GR

Carbohydrates: 37,6 GR

Protein: 11,2 GR



ART	REF	Size	Flavor	Primary pack	Pieces inner carton	Pieces outer carton
3064436	206520411	200 ML	Vanilla	Bottle	4 (x200 ML)	24
3064437	206520412	200 ML	Chocolate	Bottle	4 (x200 ML)	24
3064438	206520413	200 ML	Cappuccino	Bottle	4 (x200 ML)	24
3064439	206520414	200 ML	Strawberry	Bottle	4 (x200 ML)	24
3064450	206520415	200 ML	Forest Fruit	Bottle	4 (x200 ML)	24
3064451	206520416	200 ML	Tropical Fruits	Bottle	4 (x200 ML)	24
3064452	206520410	200 ML	Mixed flavors	Bottle	4 (x200 ML)	24

## Cenaman® drink 2 Kcal

Cenaman® energy drink 2,0 Kcal is a high caloric (2 Kcal / ML) and high protein liquid nutrition. It is gluten free and fibre free and low in lactose. For the dietary management of patients with (risk of) malnutrition, an increased energy and protein requirement and/or fluid restriction. Available in three different flavours.

Nutritional composition per bottle of 200 ML:

Energy : 400 Kcal (1680 kJ)

Fat: 15,6 GR

Carbohydrates: 45 GR

Protein: 20 GR



ART	REF	Size	Flavor	Primary pack	Pieces inner carton	Pieces outer carton
3064425	206520613	200 ML	Forest Fruit	Bottle	4 (x200 ML)	24
3064424	206520612	200 ML	Apricot-Peach	Bottle	4 (x200 ML)	24
3064423	206520611	200 ML	Vanilla	Bottle	4 (x200 ML)	24
3064426	206520610	200 ML	Mixed Flavors	Bottle	4 (x200 ML)	24

# Enteral pump

## Cenaman® N300-H Enteral Pump

Easy to use and smart to feed. Cenaman® N300-H is a simple-to-use and precise, mobile, enteral feeding pump. Designed to deliver nutrition efficiently, while offering patients better care.



ART	REF	Product	Pieces inner carton	Pieces outer carton
1701210	C061020	Cenaman Enteral Feeding Pump	1	30 (x1)

# Accessories

## Cenaman® pumpsets

The Cenaman® pumpsets with ENFit™ connection are designed to transfer liquid nutrition from a nutrition container to an enteral feeding tube with an enteral feeding pump. The ENFit™ connection ensures a safe and solid connection. Not made with Latex or DEHP. For enteral use only and only suitable for ENFit connection.

ART	REF	Product	Primary Pack	Pieces inner carton	Pieces outer carton
3069430	C061010	Cenaman Universal Pumpset W/AP	1 set	-	30 (x1)



## Cenaman® ENFit™ syringes

For administration of enteral nutrition and for flushing of enteral feeding devices. The ENFit™ connector ensures a safe and solid connection to enteral feeding devices or connectors with ENFit™ connection only. Sterile if pouch and seal are intact.

ART	REF	Size	Pieces inner carton	Pieces outer carton
3066479	409102	1 ML	30	480
3066685	409104	2,5 ML	30	600
3066686	409106	5 ML	30	480
3066704	409108-1	10 ML	100	1.500
3066706	409110-1	20 ML	100	900
3066711	409114-1	60 ML (Decentralized)	30	90
3066709	409112	60 ML (Centralized)	30	180
3066687	409116	100 ML	30	60



## Cenaman® Multi-use ENFit™ syringes

The Enteral Syringes are intended to be used for delivering liquid medication and / or formulated enteral nutrition / feed either orally or via a feeding tube into the gastro-intestinal tract.

The Cenaman ENFit™ syringes reduce the risk of an unintended misconnection. By allowing multiple uses on the same patient, these syringes reduce medical waste and contribute to a more sustainable healthcare practice.

ART	REF	Size	Pieces inner carton	Pieces outer carton	Care to care
3069016	409360	10 ML	100	1500	Yes
3069013	409330	1 ML	100	3600	Yes
3069014	409340	2,5 ML	100	3200	Yes
3069017	409370	20 ML	100	900	Yes
3069268	409370-30	20 ML	30	240	Yes
3069015	409350	5 ML	100	2400	Yes
3069018	409380	60 ML	50	200	Yes
3069269	409380-30	60 ML	30	90	Yes



The product catalog has been compiled with utmost care. All information in this catalog is subject to printing errors, type errors and changes in the range. Liability for this is not accepted.





Medeco BV  
Brandpuntlaan Zuid 14  
2665 NZ Bleiswijk  
The Netherlands

[info-medecobv@mediq.com](mailto:info-medecobv@mediq.com)  
[www.medeco.org](http://www.medeco.org)

REF 90109000



8 715343 745007